

LED show User Manual

Setup & Environment

Introduction

LEDshow is designed for LED program play and management. It mainly applied to full color LED display, both synchronous and asynchronous control system.



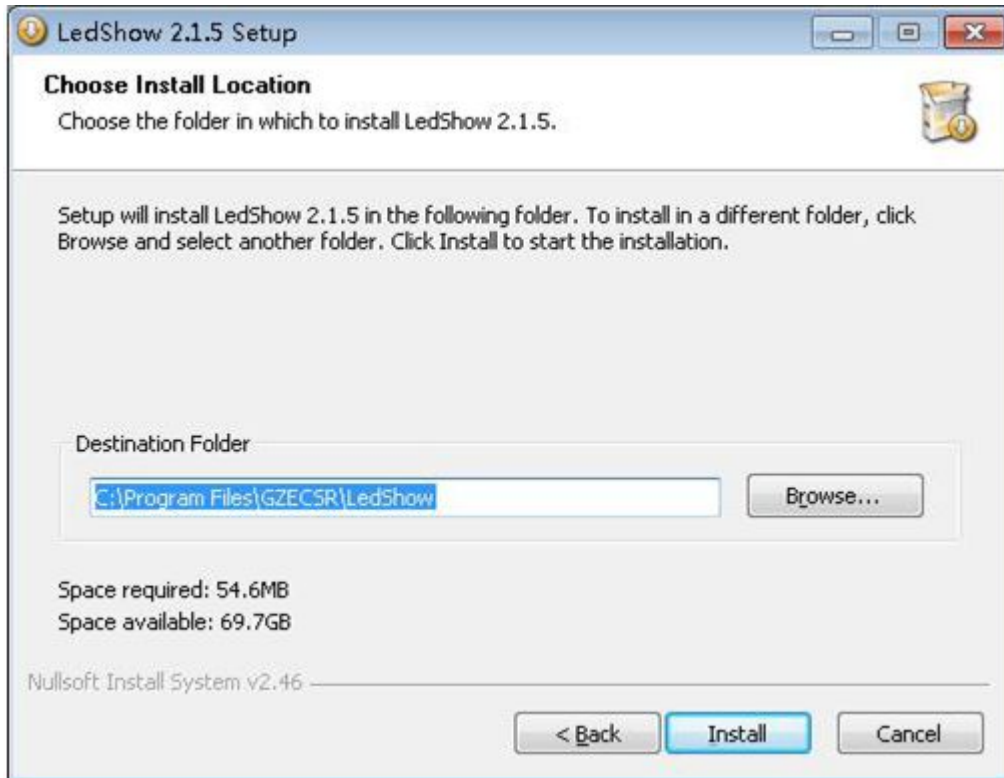
Double click LICS_Setup.exe, running install wizard



Select language and click OK



Click Next to continue;

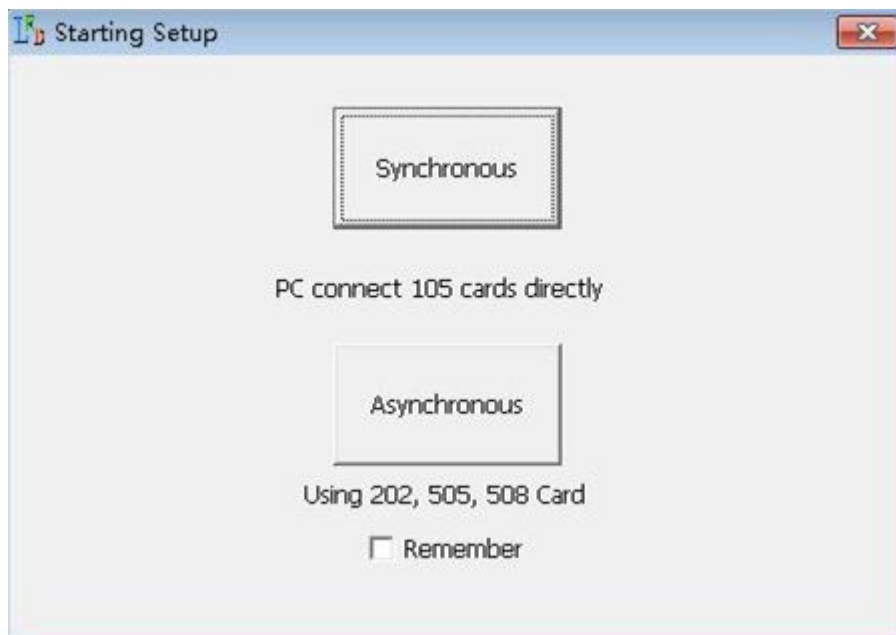


Browse destination folder if necessary, click Install to start the installation.

Running



After installation, Click LedShow shortcut on desktop

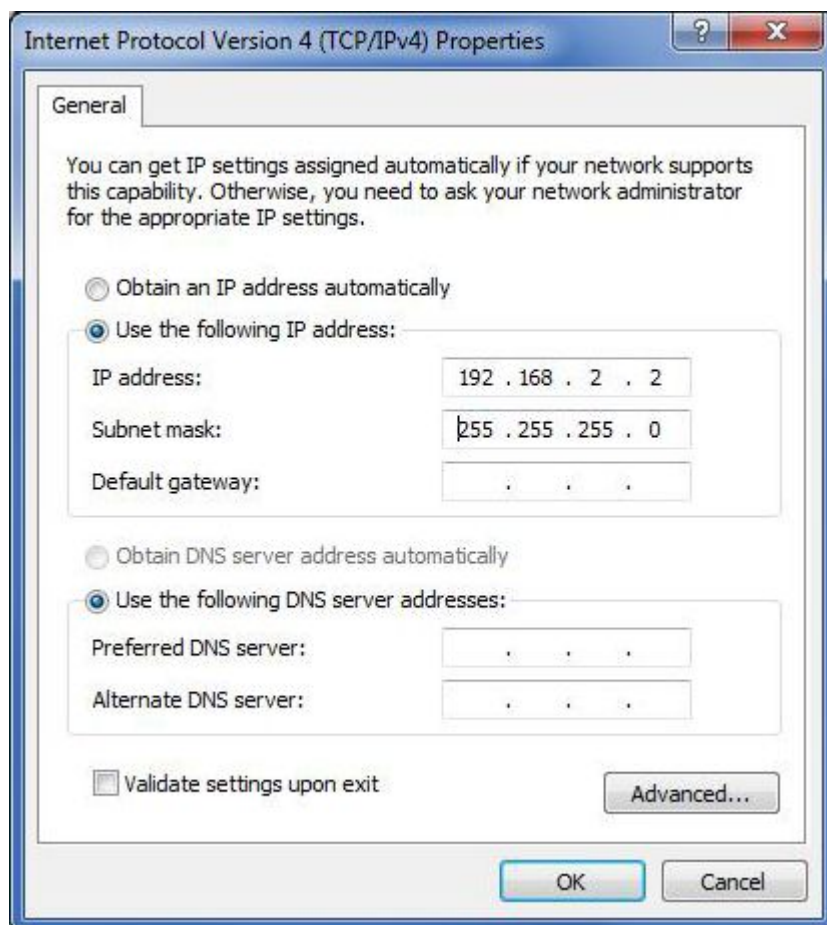


Set PC's IP address

Set up your IP address using the following format:

Default IP of Asynchronous Card (505 Card) is 192.168.2.249 and 255.255.255.0.

It is **BEST** to set the IP address as following if there is no special condition.



Synchronous System

Receiving card

LEDshow works with control card type YC-LC105. Below figure show YC-LC105 card



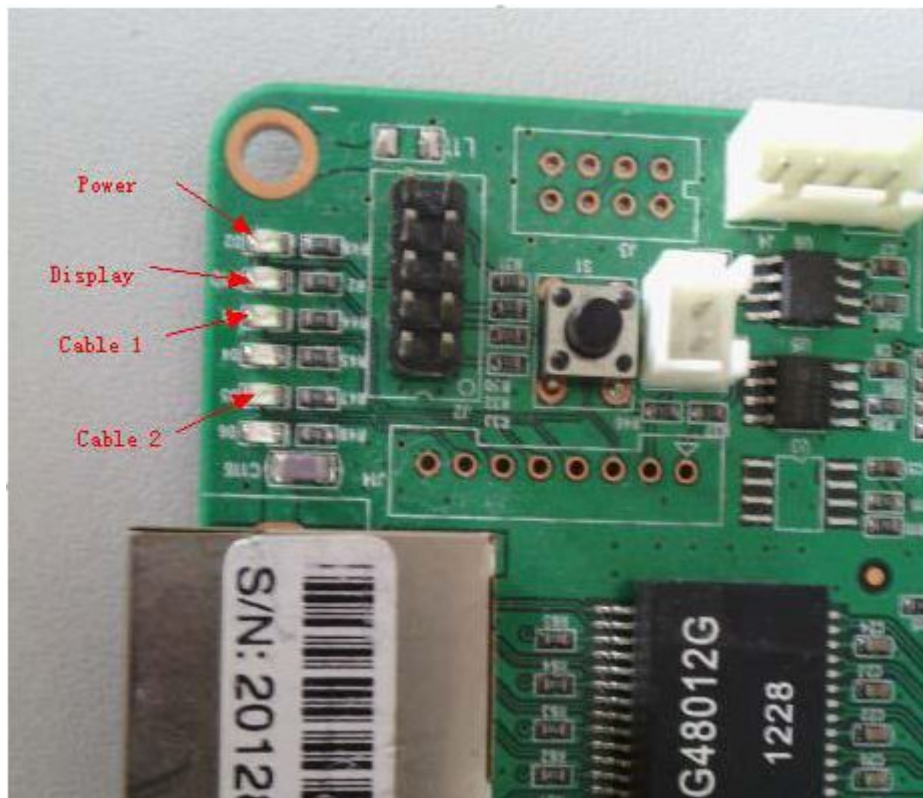
YC_LC105 card contains 2 Ethernet ports. Either one can work with input/output Ethernet cable (T568B International Standard).



One end of the Ethernet cable connects to YC_LC105 card. The other end insert



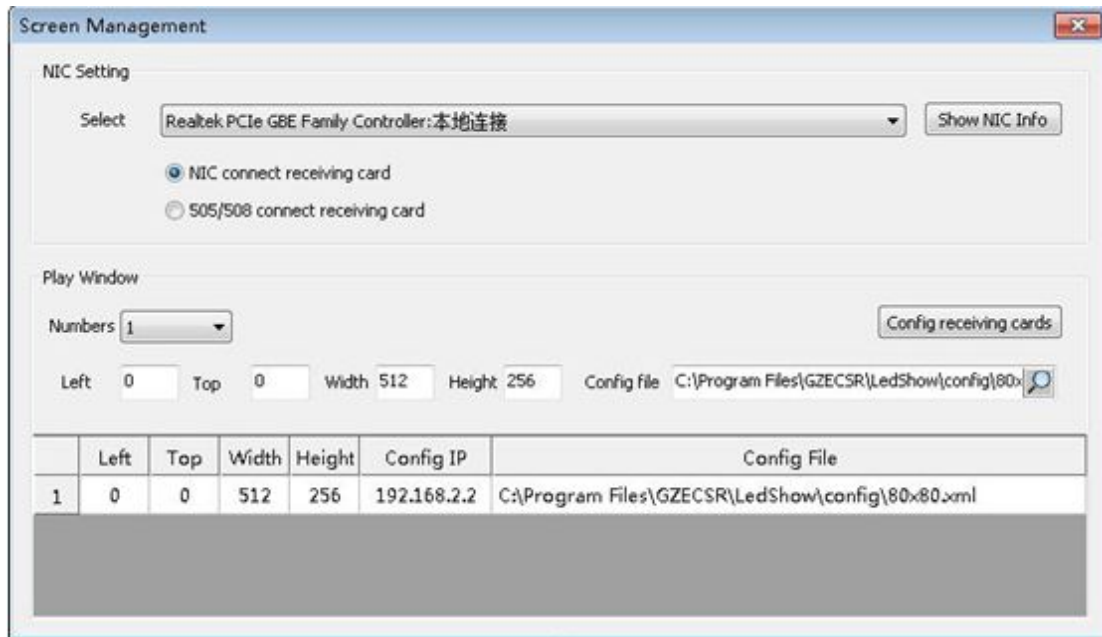
Make sure the 1000M signal light is on during the setup process. If the signal light is on, that means Ethernet port and network card are both connected properly. If the signal light is off, then either the cable or the port is not working properly. Check both items and make sure that the Ethernet cable is T568B standard and the network card is 1000M.



Setup Display

Enter Screen management

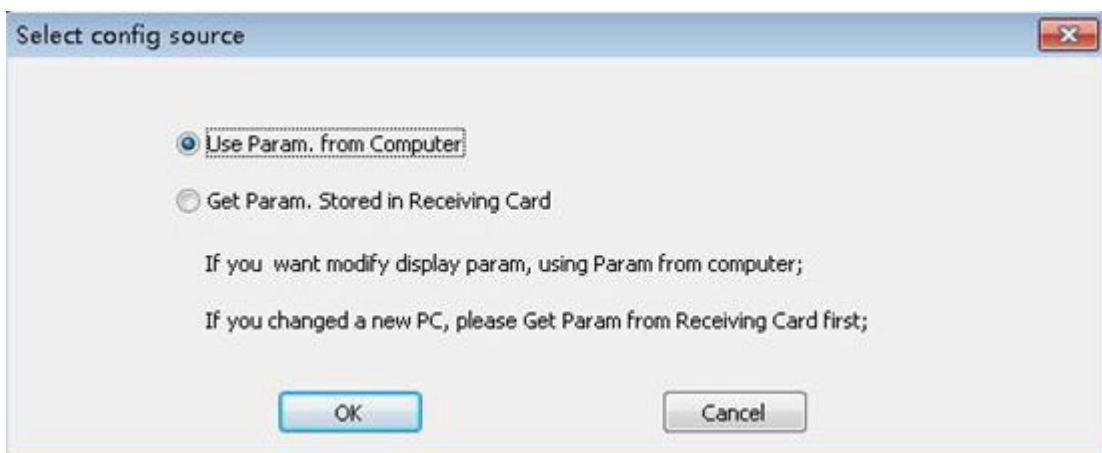
Connect “Setting”-“Screen Setting” or , enter Screen Management page.



Select current NIC, then Click “config receiving cards”button.

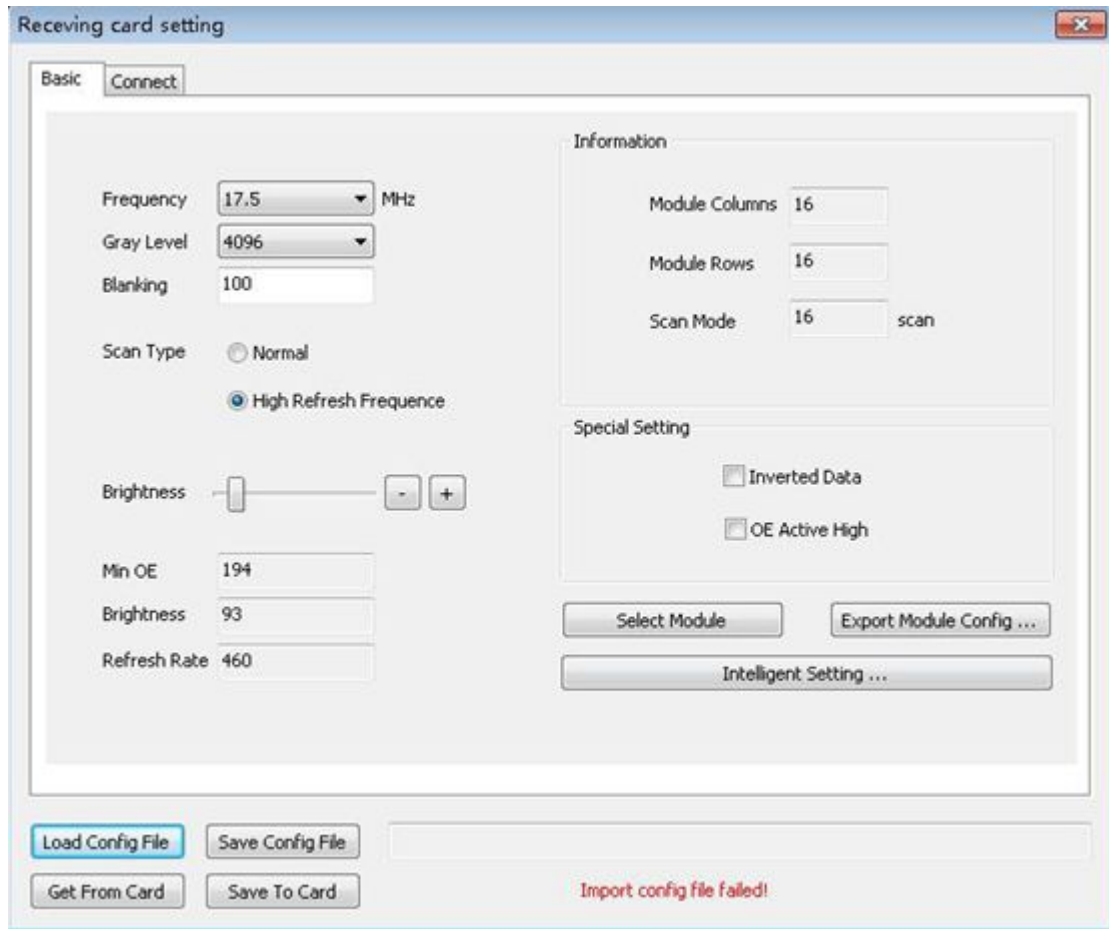


Enter the password (168).

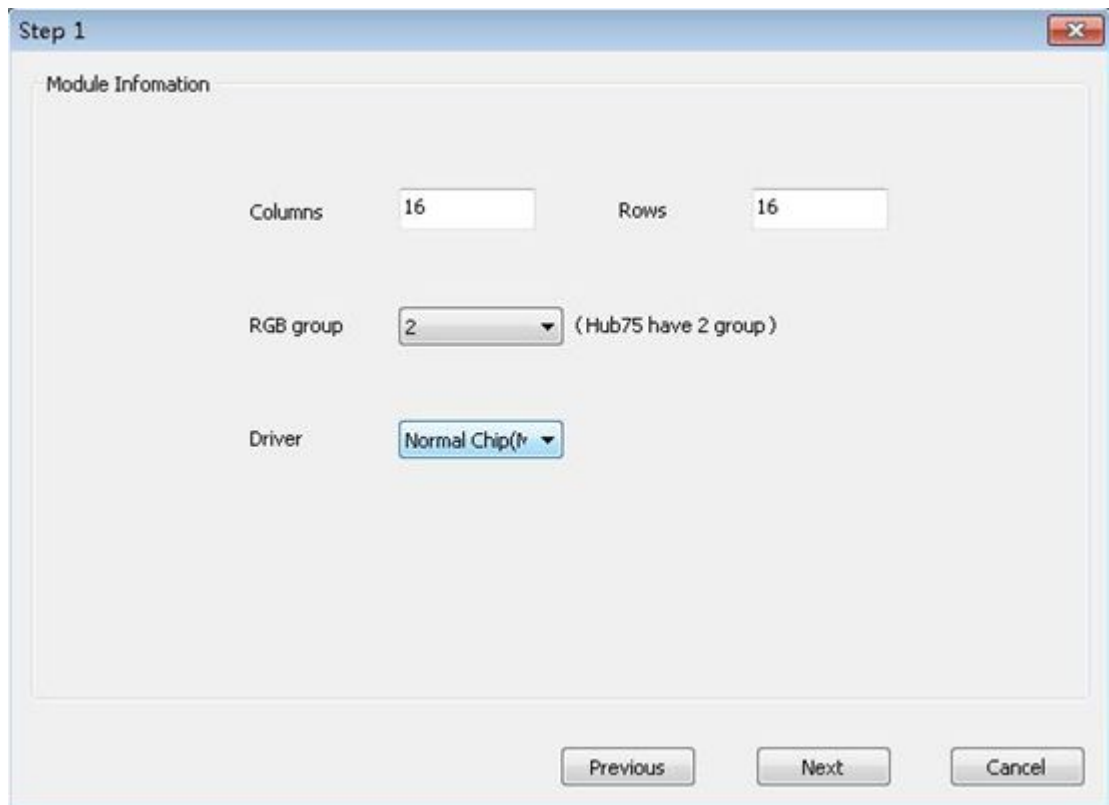


Basic Setting

Click “Intelligent Setting”,



Step 1: Module Information



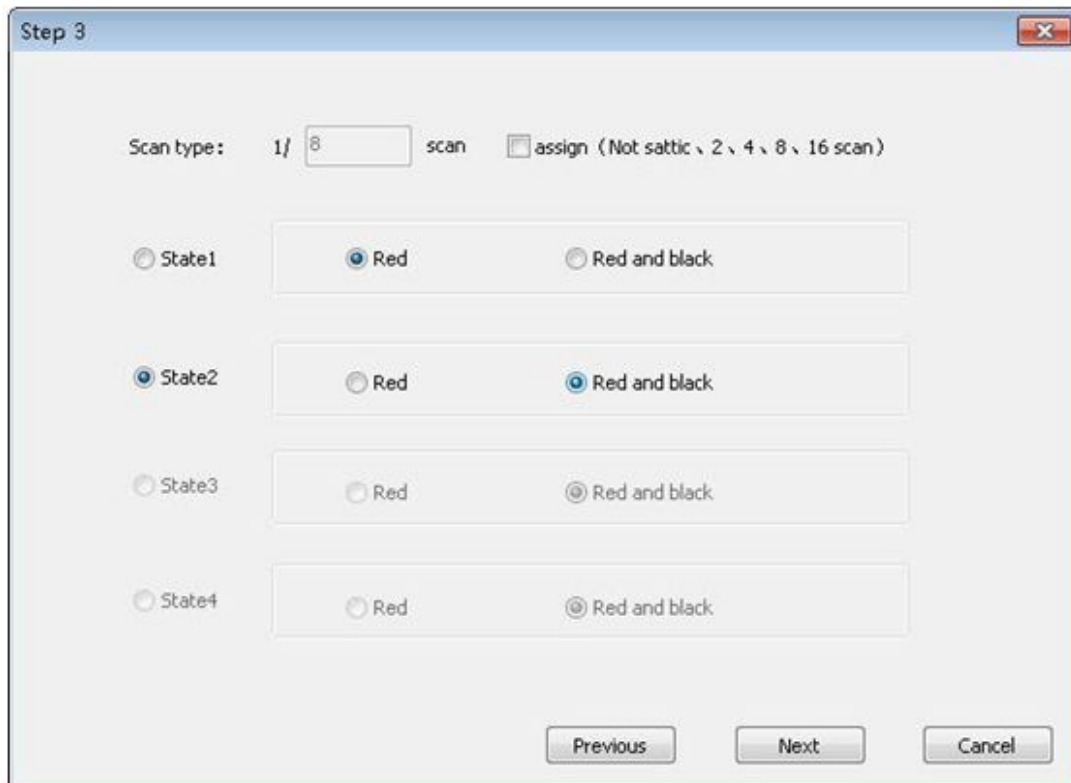
Step 2: Color setting

Watch the color that the module shows and choose accordingly, for example, state 1 displays red, click red radio button right of state 1.

The screenshot shows a window titled "Step 2" with a close button in the top right corner. At the top center, there are four colored squares: blue, green, red, and black. Below these are four rows of settings, each labeled "State1" through "State4" on the left. Each row contains a radio button for the state label and four radio buttons for the colors. In the "State4" row, the state radio button is selected (indicated by a blue dot), and the black color radio button is also selected. At the bottom of the window, there are three buttons: "Previous", "Next", and "Cancel".

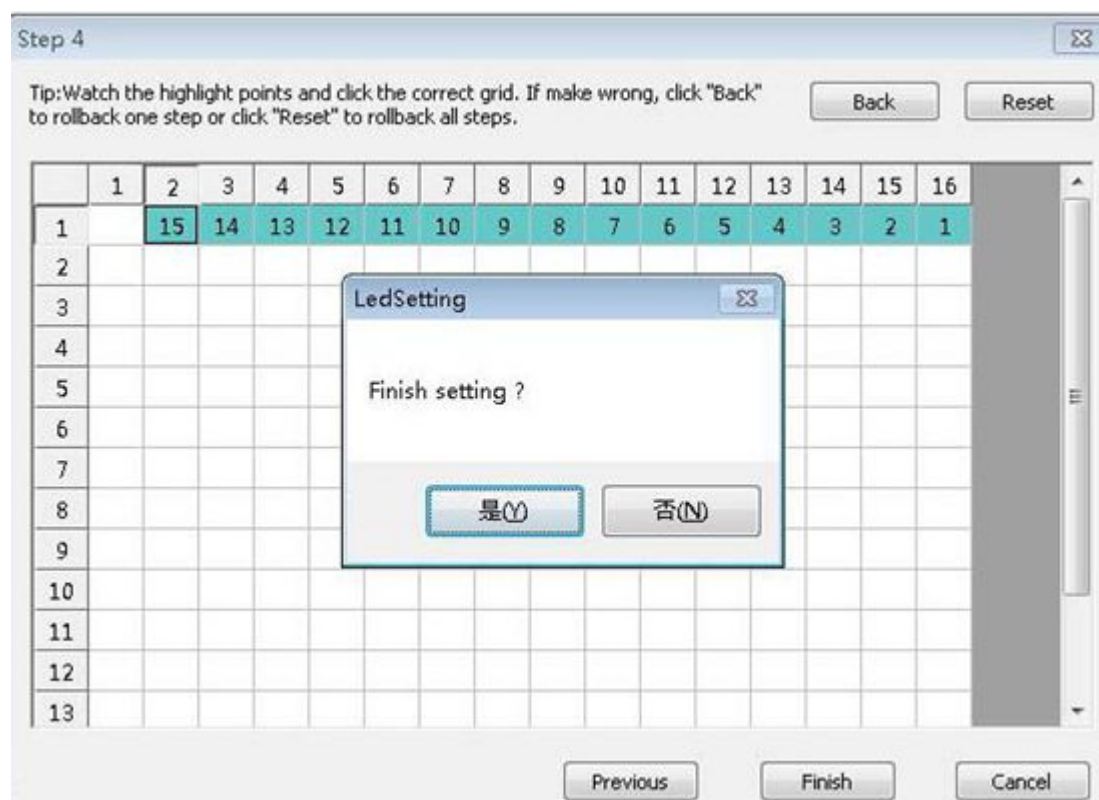
Step 3: Scan Setting

Watch the module, if the module bright red or some line red and some line black.

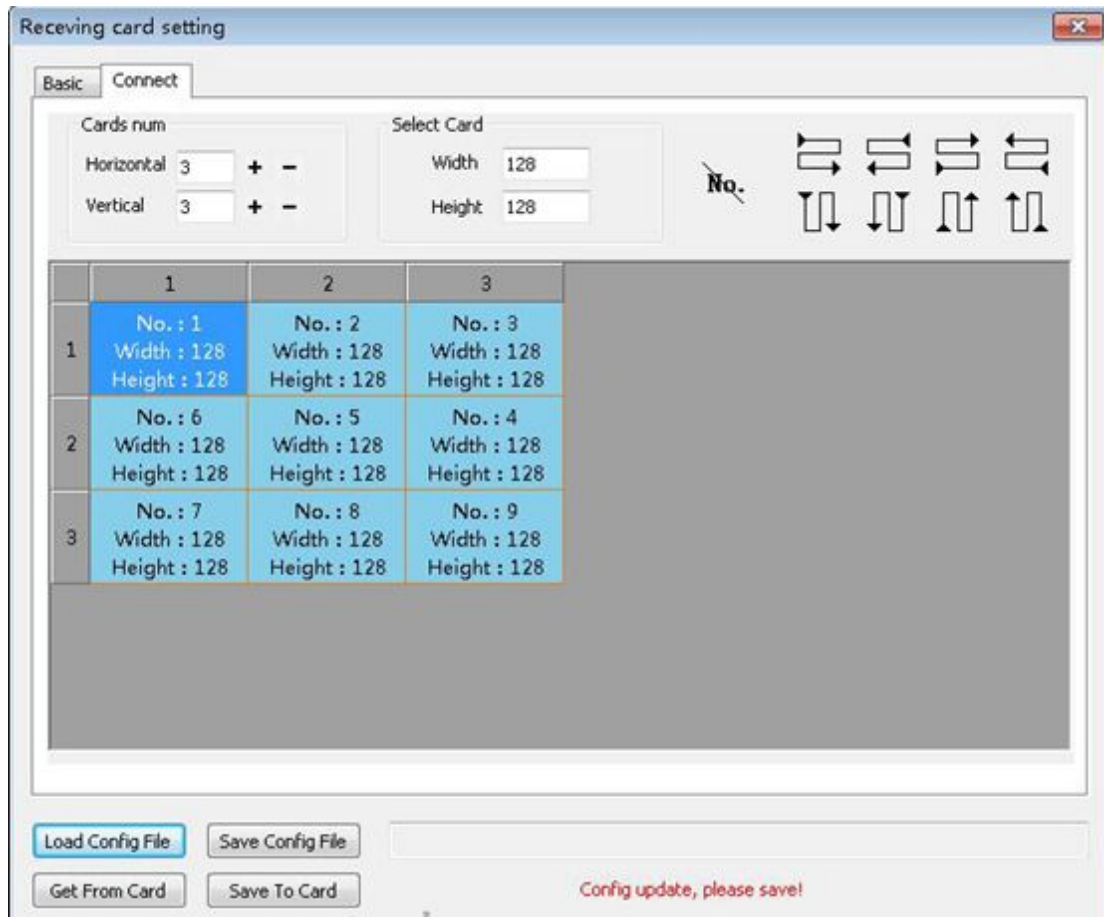


step 4: Points Setting

After click the grid, another pixel will light up in the module, continue to click the corresponding grid till the finish dialog display



Connect Setting



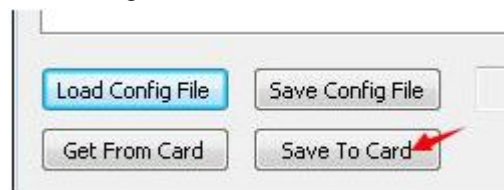
Set the correct cards num's Horizontal and Vertical, and one card's width and height.



means clear the connect order.

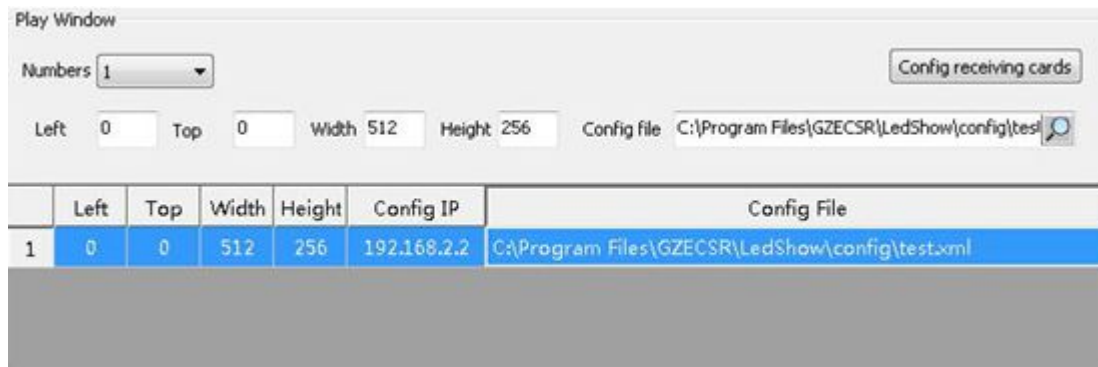
Save

After configuration, click "Save To Card", Send the setting to receiving card.



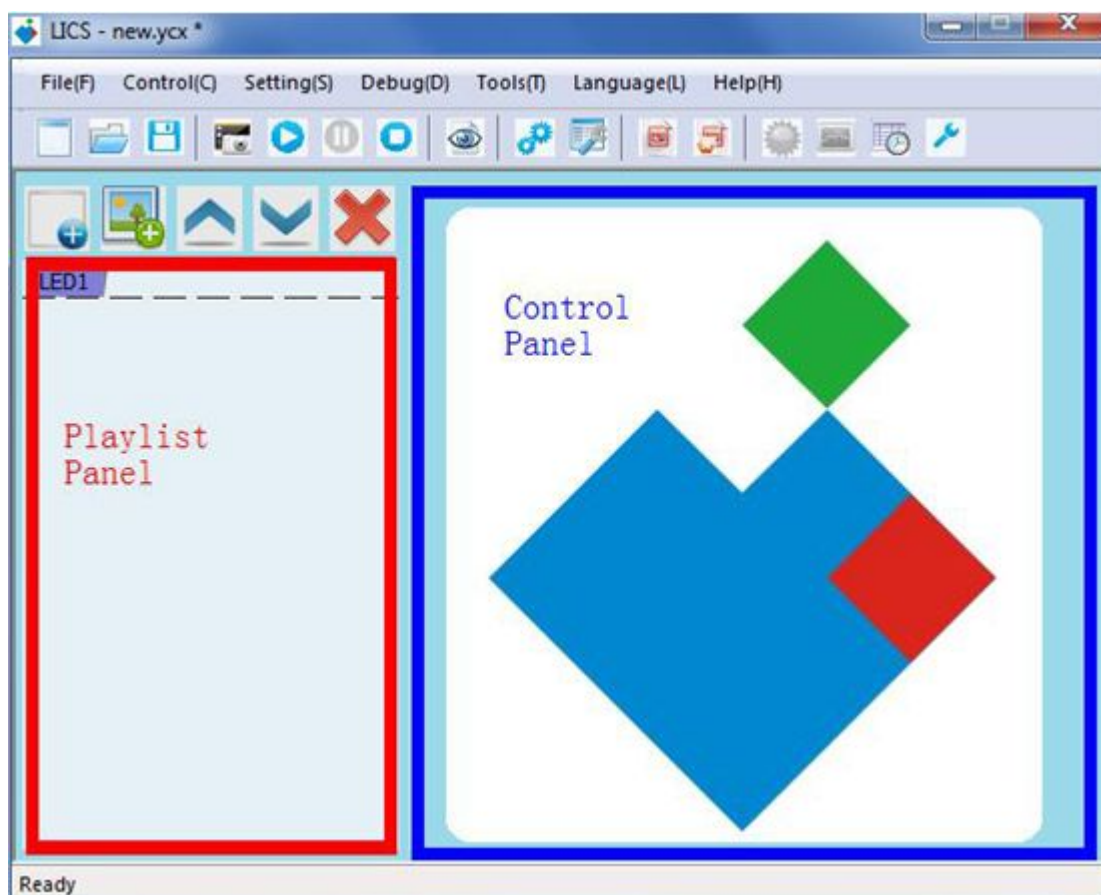
After save to card, you need save config file to computer .


Screen Setting



Left, Top, Width, Height is the position of the Play window.

Capture Screen to Display




Click  to open capture window for taking screenshot (LED display must be connected).


Open a video file in a media player (RealPlayer, QuickTime, etc.) and start playing. Drag the capture window to the position where its borders are overlapping the borders of the media player, so that the content playing in the media player is displayed on the LED screen. **Note: If your computer is using Windows XP system, disable DirectShow accelerator to properly display videos in certain formats.**


Play Window

Click **Show/Hide Play Window** to open/hide **Play Window**. **Play Window** follows set schedule to display programs. **Play Window** works with text, image, animation, video and other media files. **Play Window** has the same number of pixels the LED screen has; and the content played in Play Window will show on the LED screen in real time.

Main Tool Bar

New Playlist : to create a new playlist.

Open Playlist : to open a saved playlist.

Save Playlist : to save current playlist.

Play : to play current playlist.


Stop : to stop currently playing playlist.


Playlist Panel


Left side of the main window is the Playlist Panel. A playlist file contains one or more pages and can be displayed all the way during the play time. A step is a page, which contains one or more windows. Pages can play either in order or in repeat mode. Windows are where you set the contents of LED display.

Add Step: to create a new step/page which will play in order.

Add Window: to create a new window under the current page.

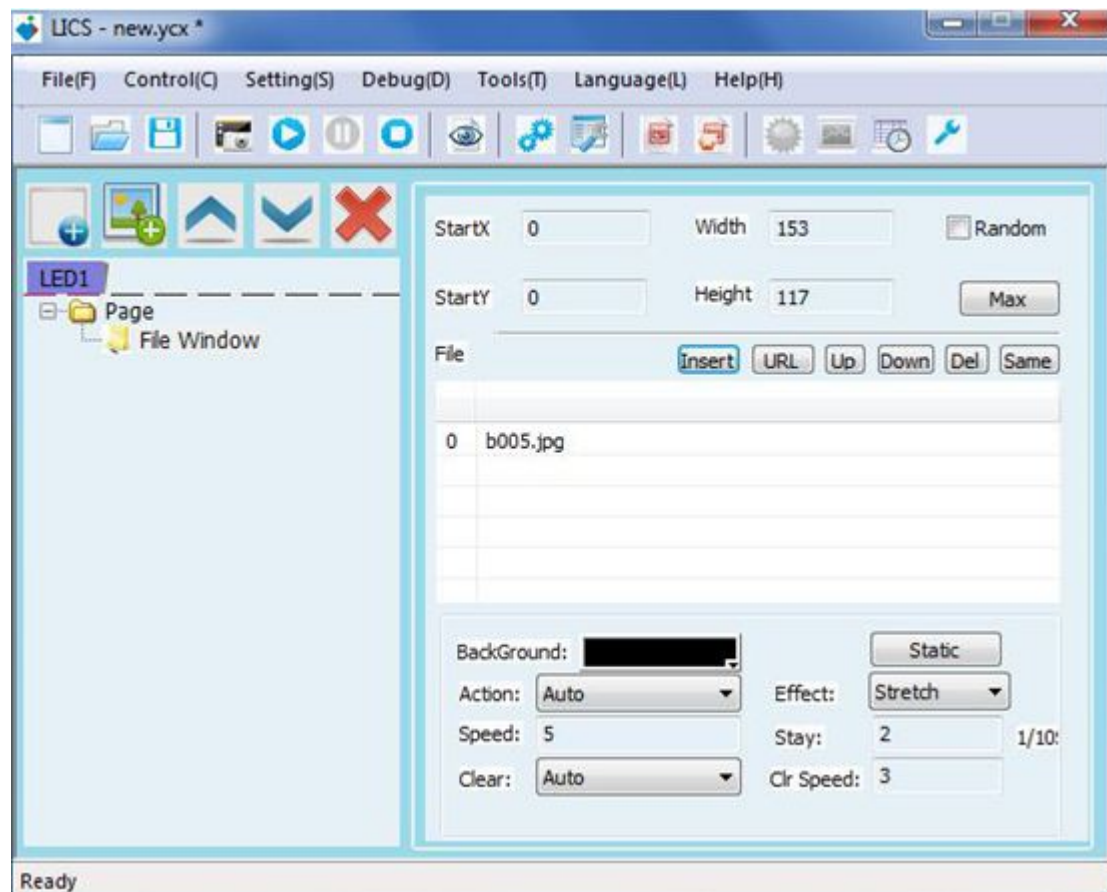
Move Up : to move up the selected page.

Move Down : to move down the selected page.

Delete Window : to delete the selected window or page.

Control Panel

In Control Panel, you may adjust the size, position, and content of the selected window. Once you choose and click on a window on the left side of the main window, control panel for this selected window will appear on the right side of the main window. You may change all value in the control panel depends on needs.



Adjust Page/Window Configurations

When a page or a window is selected on the left side of the main window, the Control Panel will show different configurations for you to adjust.

Background Control: to set the name of the page, display time, background

color, background image, background image position, etc.

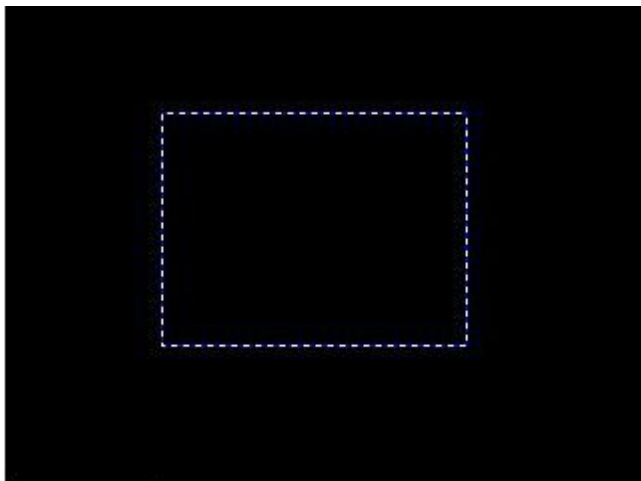
File Window Control: to change name, border color, border width, size, starting coordinate, and file list of selected file window.

Video File Control: to change background color, background image, special effect of background image when a video file is on display.

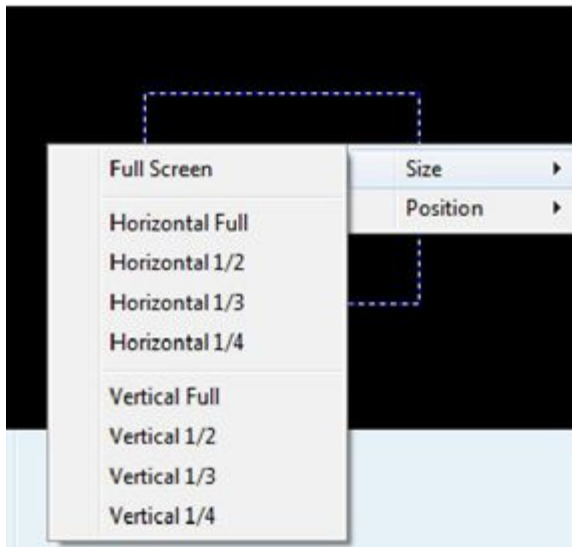
Text File Control: to change background color, background image, special effect of image, special effect of text, effect color, text speed, duration, text style, text color, etc.

Image File Control: to change background color, background image, special effect of background image, image speed, duration, disappearance style, disappearance speed, etc.

To adjust configurations of a certain sub - window, select that sub - window on playlist panel, and play window will automatically pop up. Now the size and position of the selected sub - window will show in dash line. Right click the dash - line - surrounded area to adjust size and position of the selected sub - window.



Size Setting



Right click the dash - line - surrounded area and select the size of sub - window you desire

Full - screen: to have the sub - window fill the entire play window.

Horizontal Full: the sub - window will have the full - width of play window. The height of sub - window will not change.

Horizontal 1/2: the sub - window will have 1/2 of full - width of play window. The height of sub - window will not change.

Horizontal 1/3: the sub - window will have 1/3 of full - width of play window. The height of sub - window will not change.

Horizontal 1/4: the sub - window will have 1/4 of full - width of play window. The height of sub - window will not change.

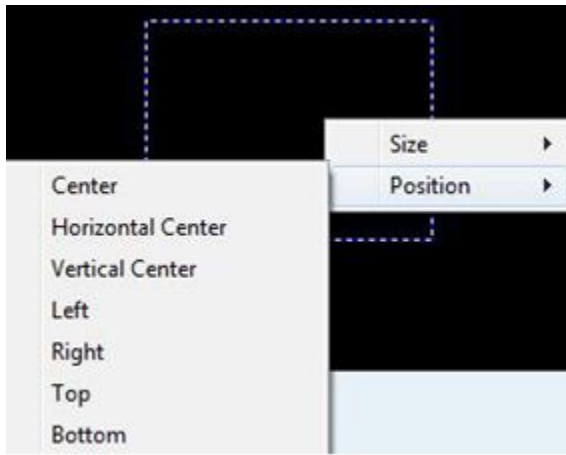
Vertical Full: the sub - window will have the full - height of play window. The width of sub - window will not change.

Vertical 1/2: the sub - window will have 1/2 of full - height of play window. The width of sub - window will not change.

Vertical 1/3: the sub - window will have 1/3 of full - height of play window. The width of sub - window will not change.

Vertical 1/4: the sub - window will have 1/4 of full - height of play window. The width of sub - window will not change.

Position Setting



Right click the dash - line - surrounded area and select the position of sub - window you desire.

Center: to place the sub - window at the center of play window.

Horizontal Center: to place the sub - window at the horizontal center. The vertical position of sub - window will not change.

Vertical Center: to place the sub - window at the vertical center. The horizontal position of sub - window will not change.

Left: to align sub - window to the left. The size of sub - window will not change.


Right: to align sub - window to the right. The size of sub - window will not change.

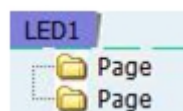
Top: to align sub - window to the top. The size of sub - window will not change.

Bottom: to align sub-window to the bottom. The size of sub-window will not change.

How to Create a Page/Step

Add A New Page/Step

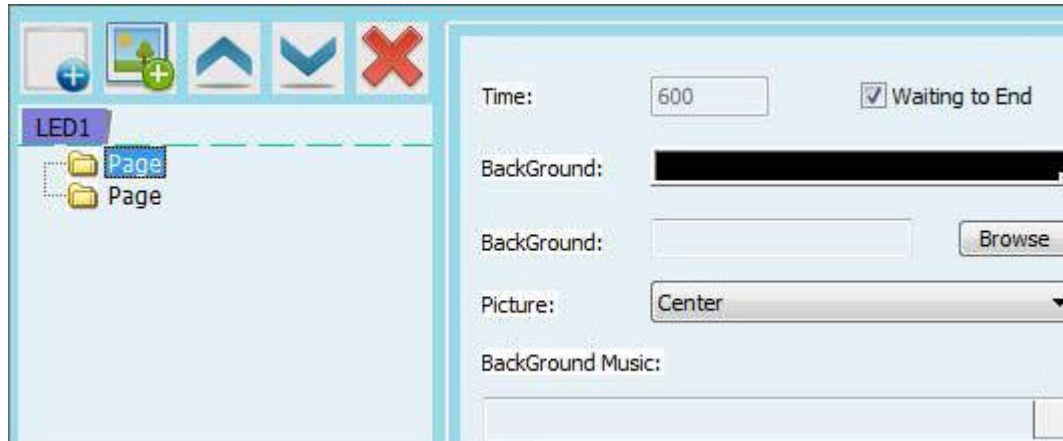
Click  to add a new page.




Click  to delete selected page.

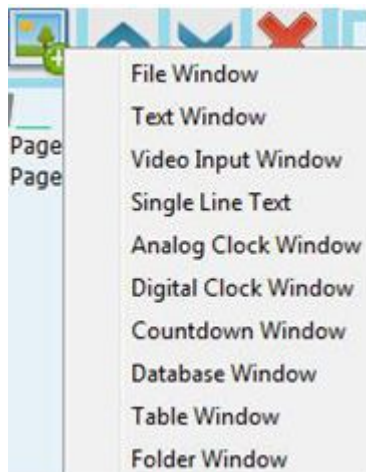
Set up Page Configurations

Select a page to set up configurations of that page, such as background_color, background image, background music, on control panel.



Add New Sub - window

A page can contain more than one sub - window. Click  and select sub - window type to add a new sub - window under current page.



File Window: In this sub - window you can add multiple files. File types supported include TXT, all images (BMP, JPG, GIF, PCX, WMF, ICO, etc.), all video files (AVI, MPG, MPEG, WMV, ASF), SWF, RM, RMVB.

Text Window: In this sub - window you may add a TXT file for display. You can also customize your text in LICS.

Set up Sub - window Configurations

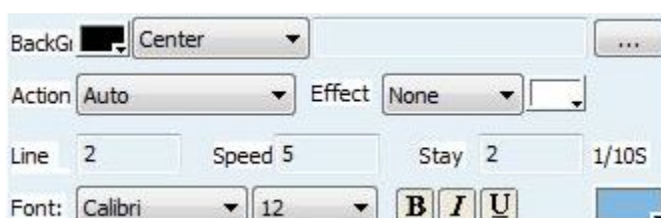
File Window:

You can adjust the name, position, borders, border color, and border width, etc. of all file windows.

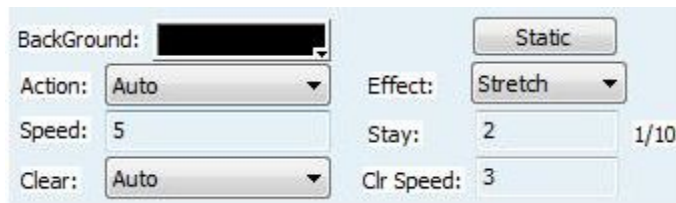
Middle portion of file window control panel is playlist. Bottom portion is file options. You can add, move up, move down, delete, and apply same mode to files in the playlist portion.



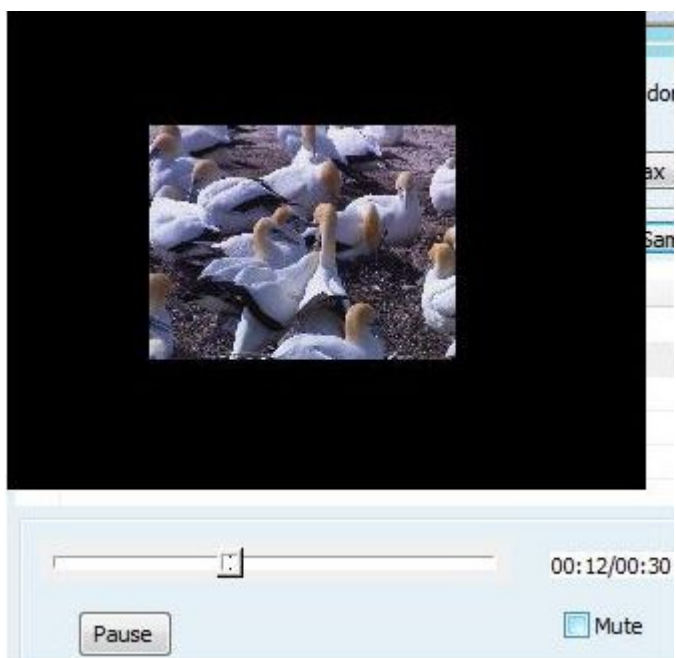
When a TXT file is selected, you can set up the background color, background image, background image mode, text speed, stay, clearing speed, etc. Also there are more than 40 types of special actions for you to choose.



If an image file is selected, you can set up background color, background image, background image mode, speed, stay, clearing speed, etc. There are more than 40 types of actions and 4 types of special effects for you to choose.

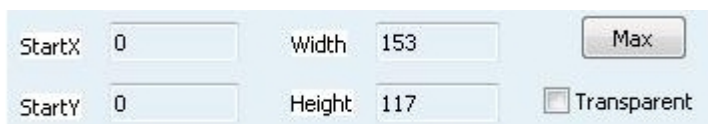


For video and animation files, you may drag the progress bar to preview the video content.

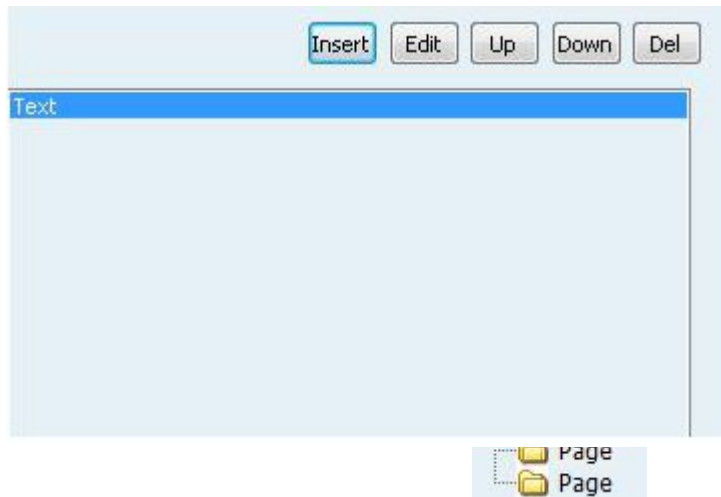


Text Window:

You can adjust the name, position, borders, border color, and border width, etc. of all text windows.

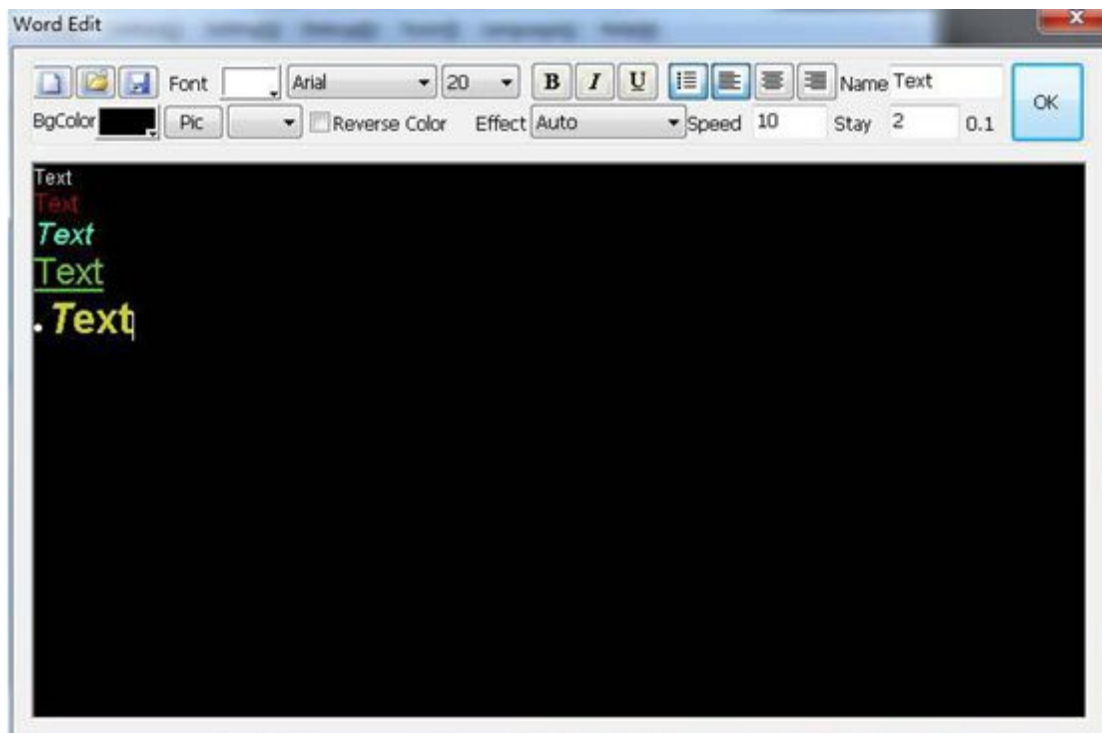


The following figure shows the playlist and editing portion of text window control panel. In this portion, users can add, edit, delete, move text files.



Users can also edit text content. This function is similar to Microsoft Word.

Fonts, special effects, speed, stay, etc. can be set here.



After editing text content, users may directly close the editing window.

Other Sub - window Types

The setup procedures of video input window, single line text window, analog clock window, digital clock window, countdown window, database window, table window, and folder window are similar to file/text window. Please follow Step 4 to set up all types of windows.

Finish

Now, one complete page is finish. If more pages are needed, please repeat Step 2 to Step 5. After finishing editing the entire playlist, click Save to save current playlist.

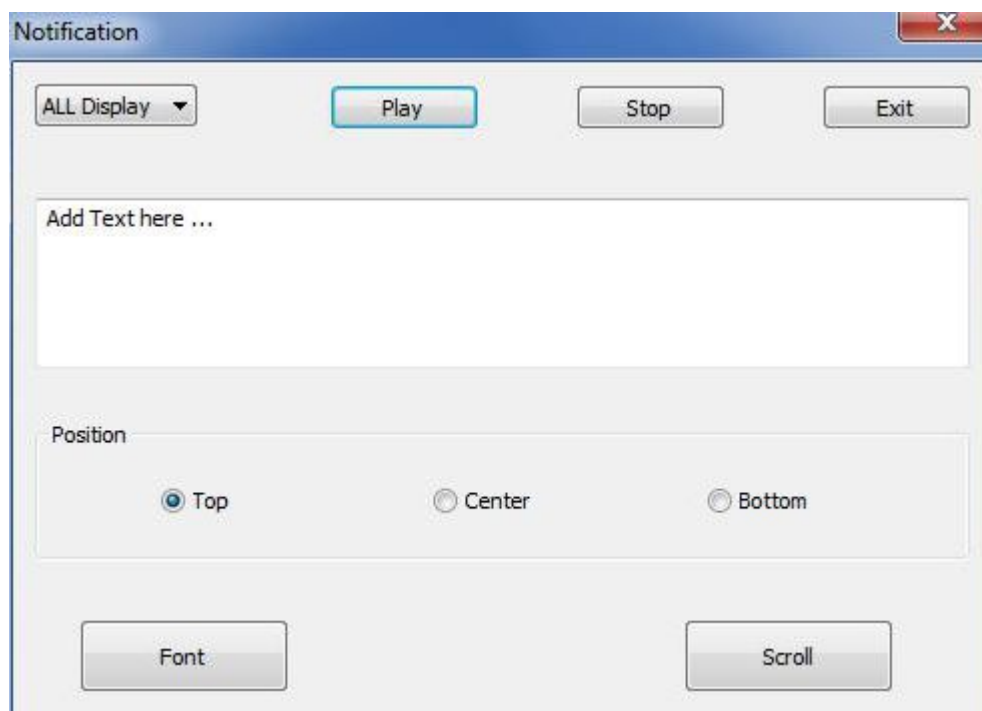
Play

To display current playlist, click . To stop playing, click .

Fast Notification

Click **Control**  **Notification** to open notification menu.

Set up all configurations in the pop - up window, and then you may send out text currently shows in window to LED display.

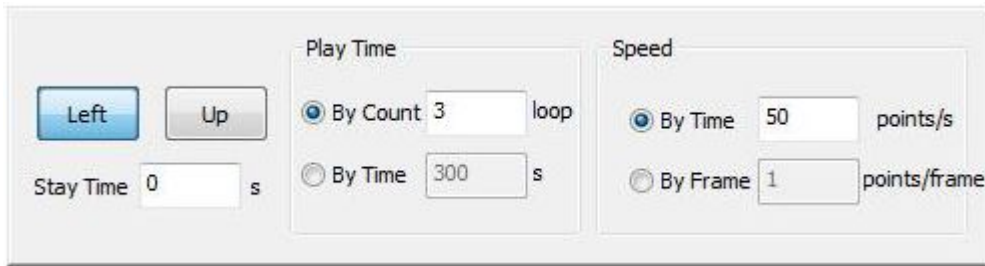


Scrolling Setting:

Left: to have text move from right to left.


Up: to have text move from bottom to top.


Speed: to change the speed text character moves. Slowest is 1/5 pixels/frame. Fastest is 6 pixels/frame.k



After setting the content, font, position, scrolling speed etc. of the notification, click Play to display the notification on LED screen

Play PPT File

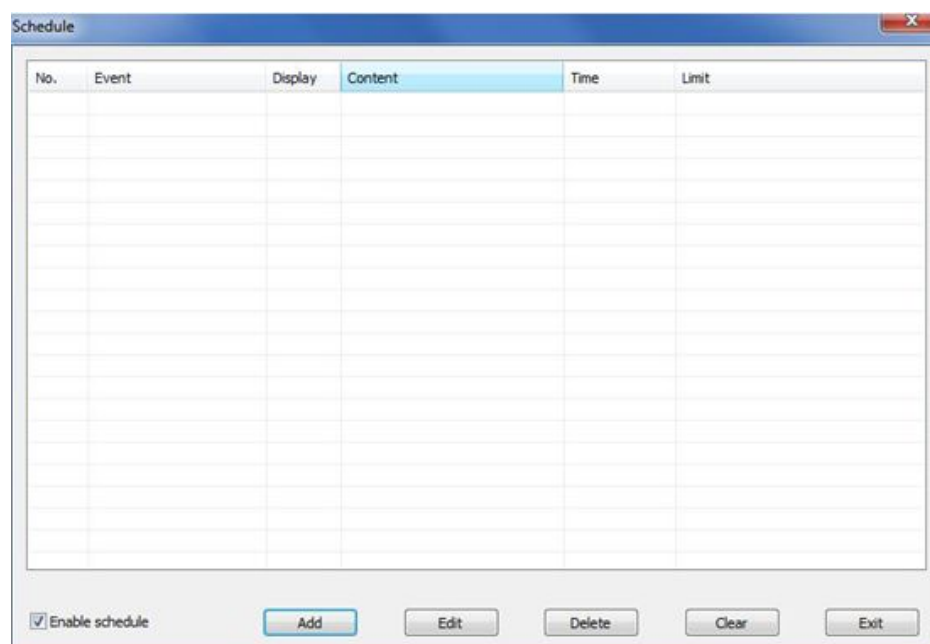
Click  and select the PPT file you want to play in the pop - up window to directly play that PPT file.

Click  to stop playing.

Schedule

Schedule is a feature for customers who need to set their LED screen to display contents strictly according to a precise timeline.

a. Click to open schedule list window.



b. Add a New Schedule Item

Click **Add** to add a new schedule item.

The screenshot shows a dialog box titled "Add Schedule Item". It contains the following fields and options:

- Content:** A dropdown menu with "Playlist" selected.
- Display:** A dropdown menu with "LED1" selected.
- Playlist:** A text input field with a "Browse" button to its right.
- Time:** A text input field with "3:18:19 AM" and a time selection icon.
- Valid Date:** Radio buttons for "Unlimited" (selected) and "Date". Below "Date" are "From" and "To" date pickers, both set to "8/22/2013".
- Valid Week:** Radio buttons for "Unlimited" (selected) and "week". Below "week" are checkboxes for "Sunday", "Monday", "Tuesday", "Wednesday", "Thursday", "Friday", and "Saturday".

At the bottom of the dialog are "OK" and "Cancel" buttons.

Content: to select the action to be carried out. Default action is to add playlist for display.

Playlist: to select previously saved playlist file.

Time: to set up when current action to be carried out.

Valid Date: to set the dates when current action would be carried out.

Valid Week: to select the day in a week when current action would be carried out.

Click **OK** to save this schedule item.

c. Edit Schedule Item

Select a schedule item from schedule list and click **Edit** to edit the selected schedule item.

d. Delete Schedule Item

Select a schedule item from schedule list and click **Delete** to delete the selected schedule item. If you want to delete all schedule items, click **Clear**.

e. Save Schedule

After editing the schedule list, click **Exit** to save and leave the page.

Asynchronous

505\508 Card connect



DC: DC 5V/2A power;

USB: Extra USB storage, also can be used to update files;

WAN: Connect Asynchronous card to PC using Ethernet cable through this port;

LED 1: Connect 505 Card to LED Display Intelligent Control Card (101 Card) using Ethernet cable through this port. **If the LED screen contains less than 1 million pixels, use this port only.**

LED 2: Connect 505 Card to 101 Card using Ethernet cable through this port. If the LED screen contains more than 1 million pixels but less than 2 million pixels, use both LED 1 and LED 2.



UART1: Serial port 1

UART2: Serial port 1

IN HDMI: Input HDMI signal, connect computer or video processor.



Switch: Switch Sync and Async, press this button 2 seconds then release.

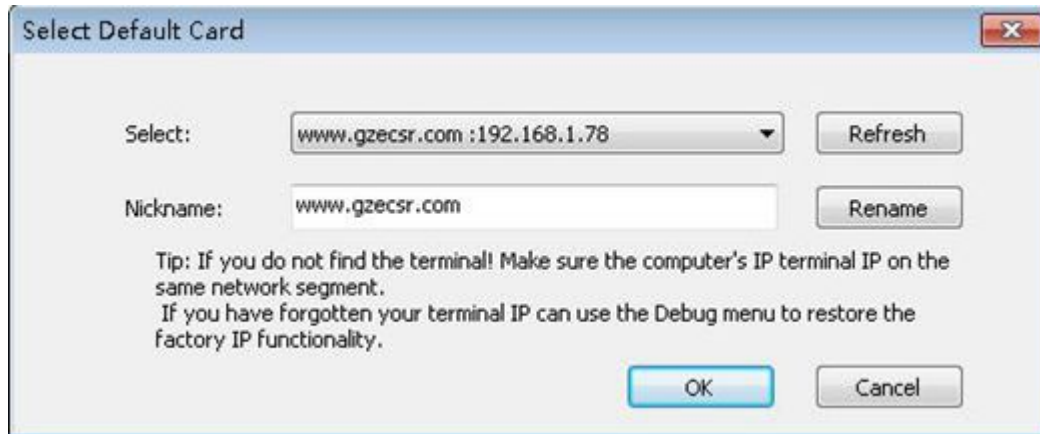
SD Card: Extend SD card capacity up to 32GB.

Audio Jack: Stereo sound system. Connect card to speakers or earphones, etc. through this port.



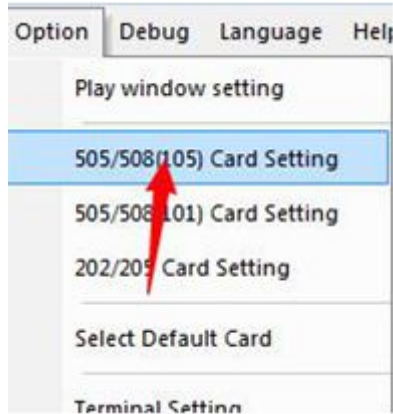
Select default card

Click “Option” — “Select Default Card”, and click Refresh. Program will find sync card connect to pc.

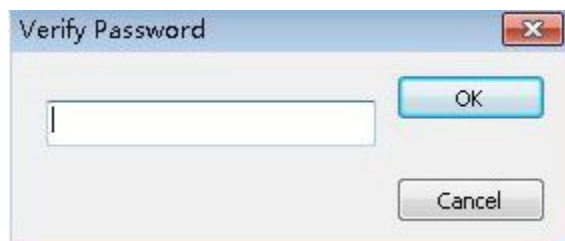


Config Screen

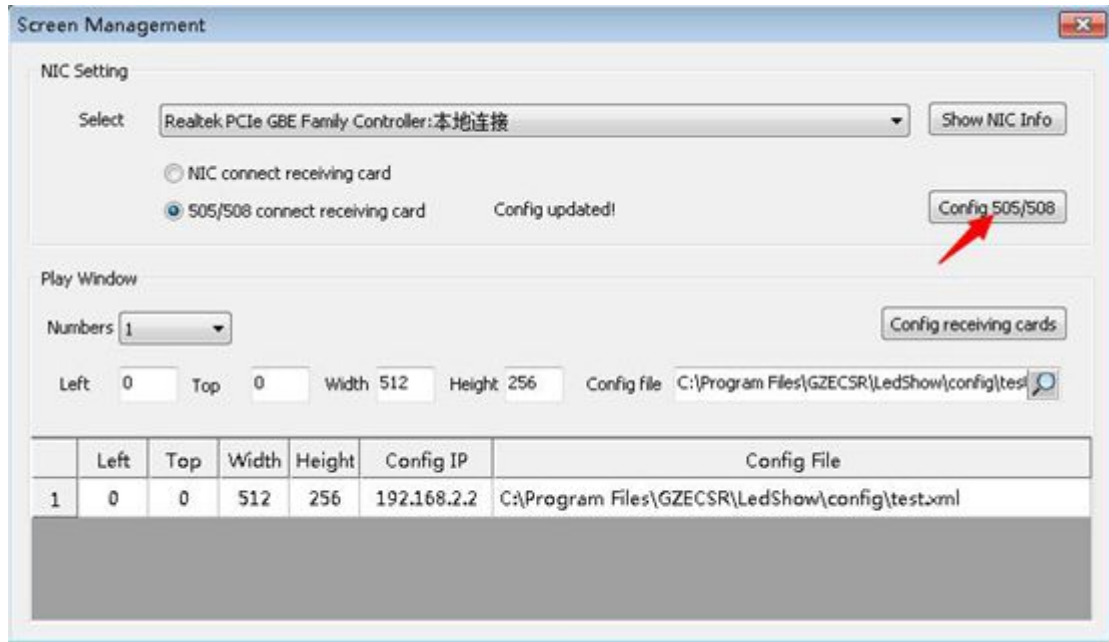
Click “Option”—“505/508(105) Card Setting”,



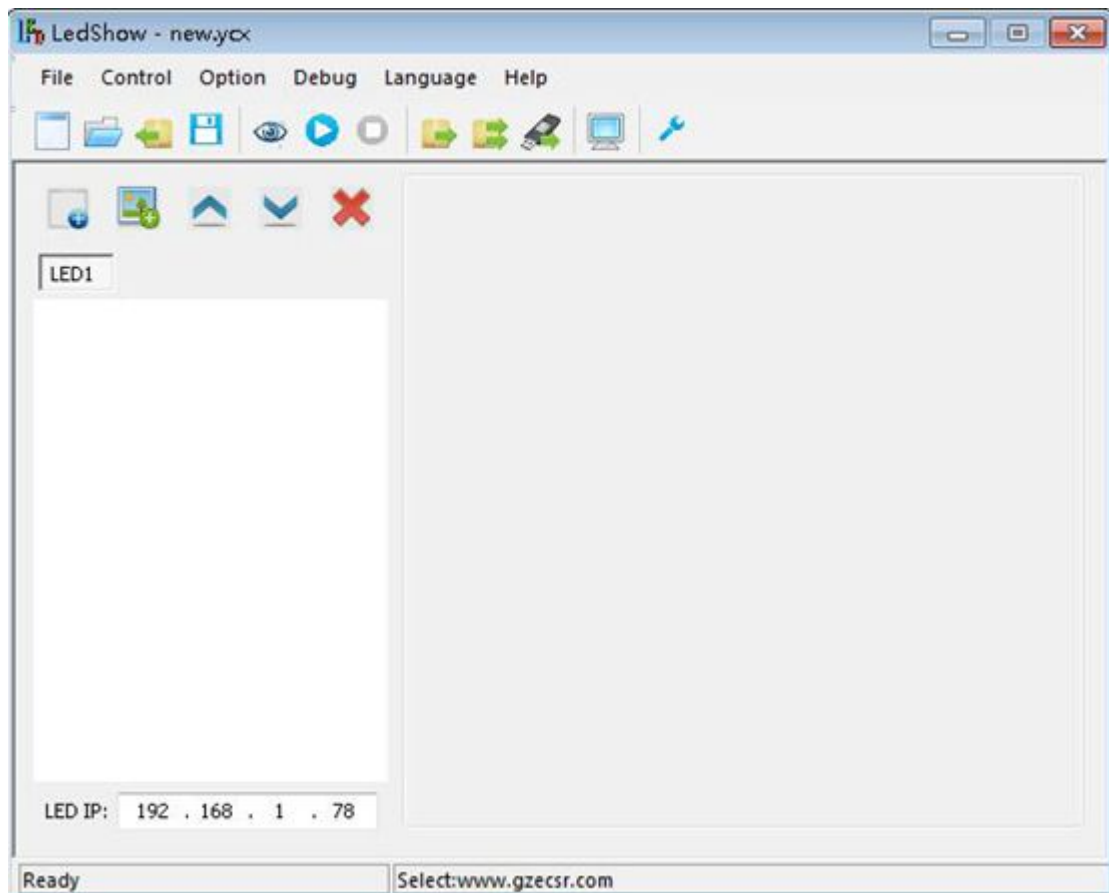
Enter the password (101 or 168);



After config receiving cards, click “Config 505/508” to send the screen setting to 505/508 card.




Main Panel of LedShow





Quick Access Toolbar

New Playlist: to create a new playlist.


Open Playlist : to open existing playlist.


Get Card Playlist : to load playlists saved in Asynchronous Card (505 Card) to computer.


Save Playlist : to save the currently editing playlist.

Play : to play the currently selected playlist.

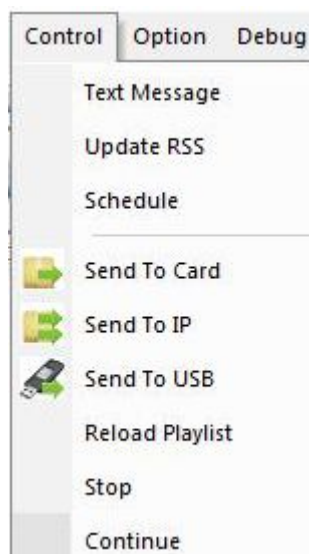
Stop : to stop the currently playing program.

Send to Card : to export playlist to 505 Card.

Software Setting : to set up configuration of the software.

Sync/Async Switching : switch from sync mode and async mode.

Control Menu



Text Message: to display text messages on screen in real time.

Update RSS: to play online RSS News.

Schedule: to create a schedule with playlists and timeline, so that the screen can display specified playlist at specified moment.

Send to Card: to export playlist to 505 Card.

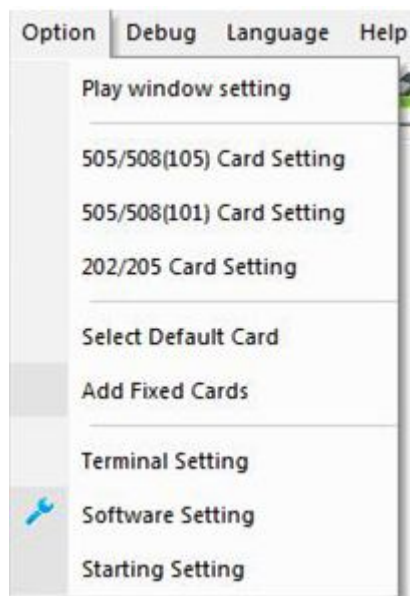
Send to USB: to export playlist to flash drive.

Reload Playlist: to replay the playlist from the beginning.

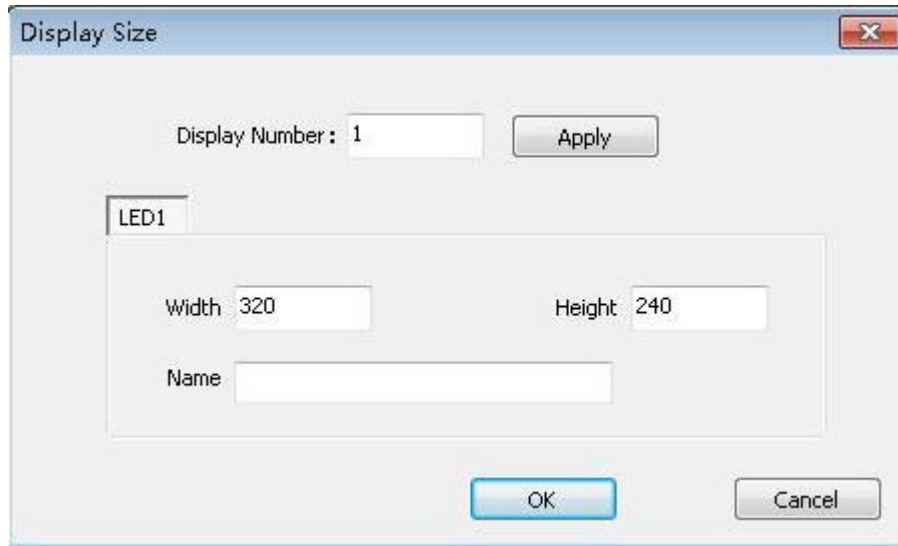
Stop: to stop the currently playing program.

Continue: to play the currently stopped program from where it stops.

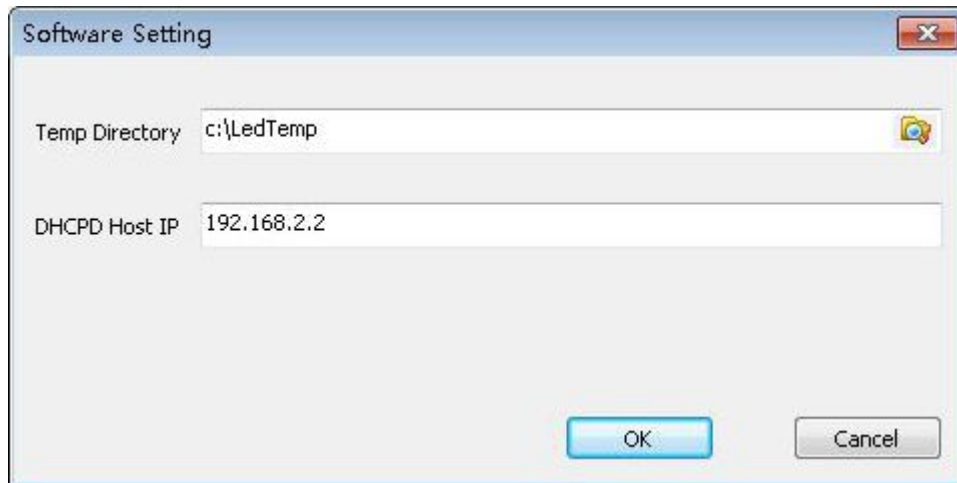
Option Menu



Display Size: to set the width and height of the LED display. Please fill in data before playing programs.



Software Setting: to set up temporarily file location and DHCP IP address.



Terminal Setting

Click Option ↗ Card Setting to open window for configuring 505 Card.

Network Setting: to set up network configurations including IP address and password for wired and wireless Internet access. Reboot LedShow after updating configuration.

DHCP
 Fixed IP Address:

IP Address:
 Netmask:
 Gate way:
 DNS Server 1:
 DNS Server 2:
 MAC:

Note: If Wifi network is in using, this Gate way must be 0.0.0.0

Login ID: to create server IP, account and password for this terminal for remote

Select Terminal:

Server Address:

Login ID:

Password:

Merchant:

Display Width:

Display Height:

Playlist: to view and delete playlists saved on terminal (505 Asynchronous Card).

Card Files: to view or delete media files saved on terminal.

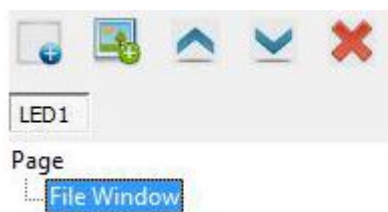
Card Font: to view or delete fonts saved on terminal.


Card Time: to view or set time for the terminal.


Storage: to specify a storage hard disk, such as flash drive, SD card, or portable hard disk, Click “Update” first, then click “Initialize Storage”, wait until the card auto reboot.





Playlist Control Panel




Add Page : to add an ordinary playlist. Playlists are displayed according to their orders.

Add Window : to add file window in one playlist.


Move Up : to move up the selected playlist.


Move Down : to move down the selected playlist

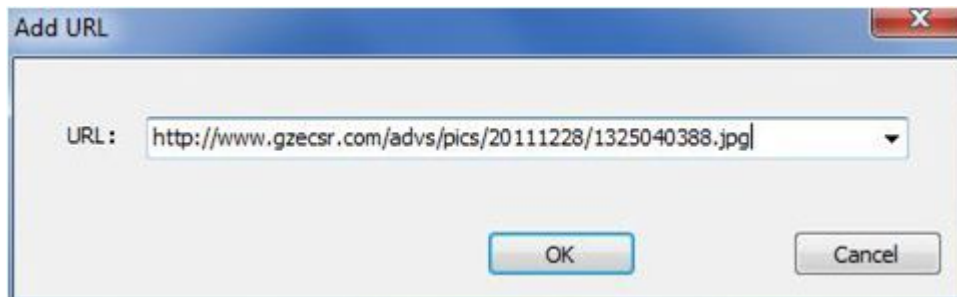
Delete Window : to delete selected window or playlist.

File Window Control Panel

Select a file window on the left side of the main window to open **File Window Control Panel**.

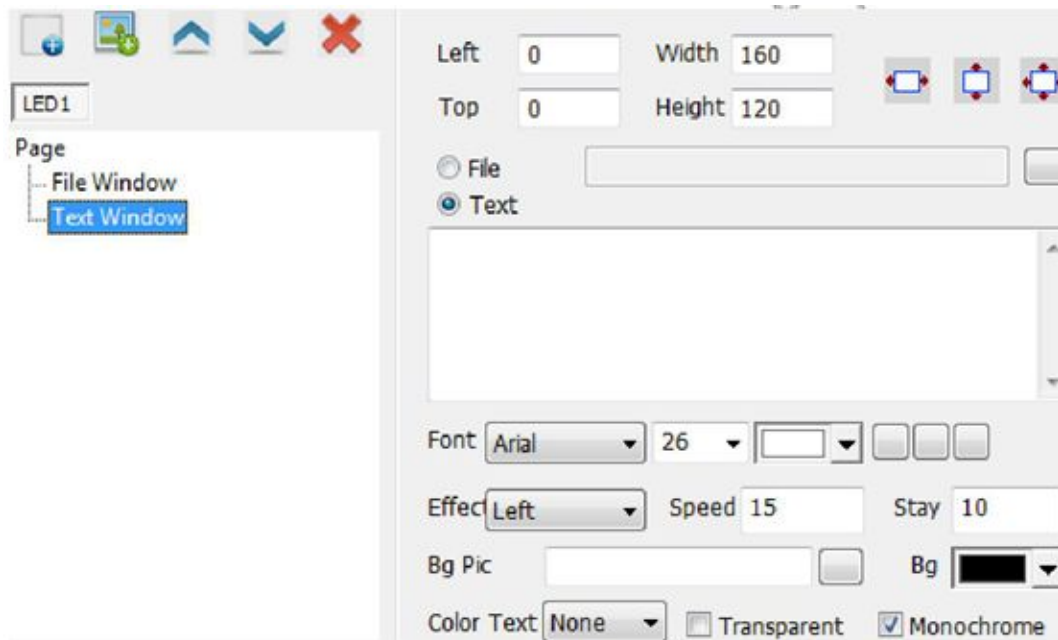
Add File  : to add file from local computer or terminal. To save files in terminal, you can transfer files from computer to terminal through flash drives or Internet.

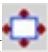
Add Internet File  : to add pictures and videos from the Internet!



The Same Type of Files' Attribute Set to the Same  : to set all the selected files to have the same time length, speed, and special effect for display.

Simple Text Control Panel

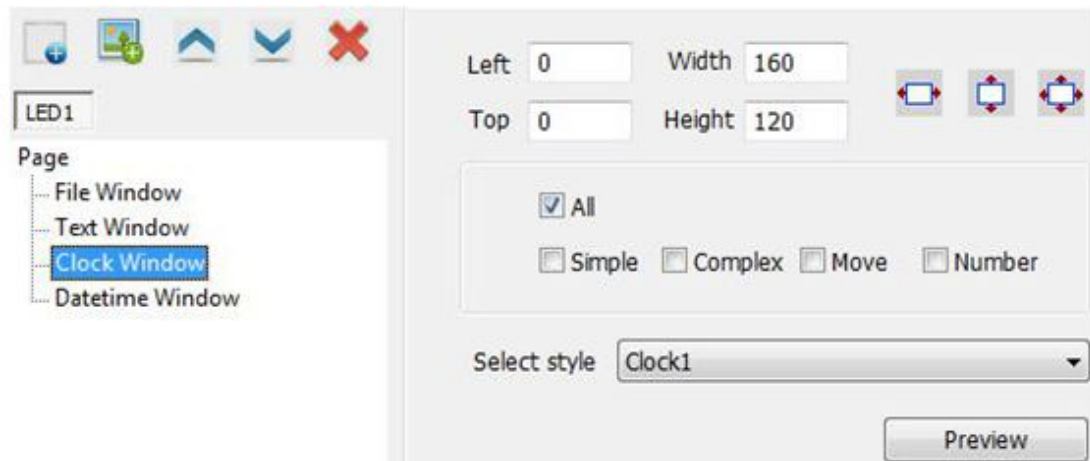


Click  to maximize the window.

Speed: 0 is the fastest speed. The larger the number is, the slower the speed is.

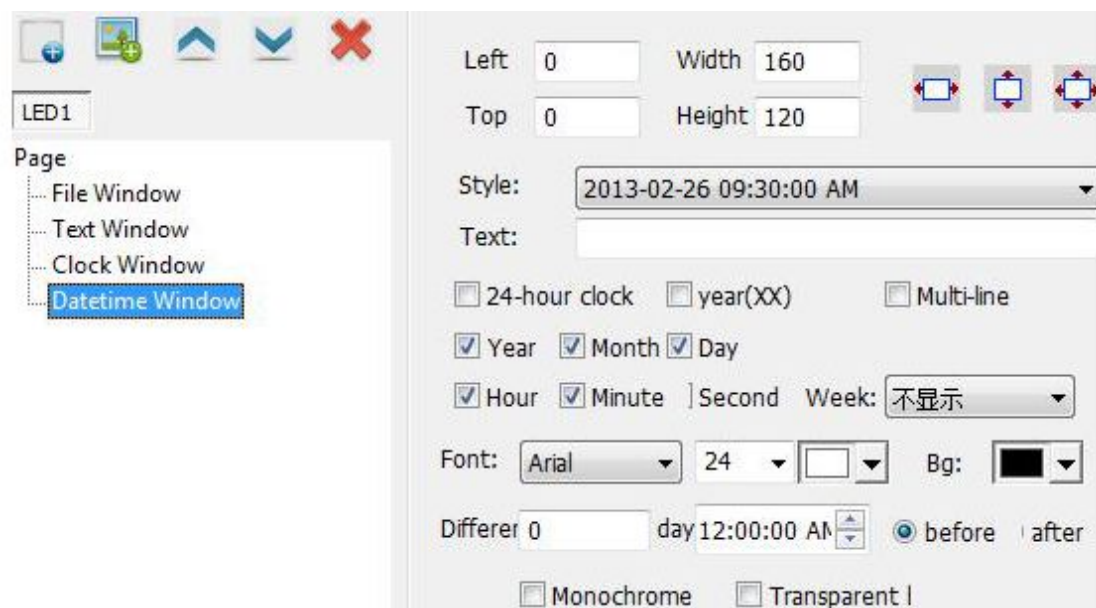
Clock Window Control Panel

Clock Window is capable of presenting time.





Datetime Window Control Panel

Functions of Datetime Window include showing lunar calendar, countdown, etc.

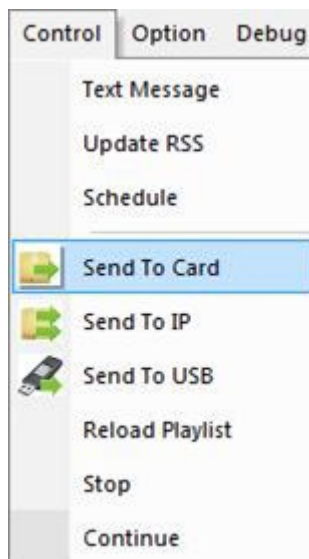


Update Playlist

Send to Card

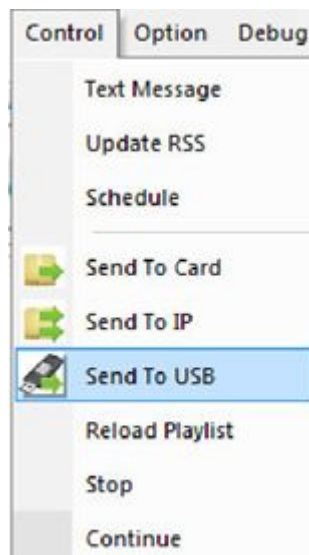
After finishing editing playlist, click Control  Send To Card or simply click  to send

playlist to terminal (505 Asynchronous Card).



Send to USB

Click Control ↗ Send to USB to send saved playlist to flash drive. LedShow will automatically scan for flash drive and portable hard disk. Select the appropriate flash drive, then click OK to finish.



After the file is transferred to the flash drive, insert this flash drive into the USB hub. 505 Card will automatically download playlist file from the flash drive. Previous playlist saved in 505 Card will be permanently deleted. When download is finished, 505 Card will automatically reboot. After reboot, you can remove the flash drive and start playing the new playlist.

Change Storage Option

Click Option ➤ Card Setting ➤ Storage, and then select the desired storage method.

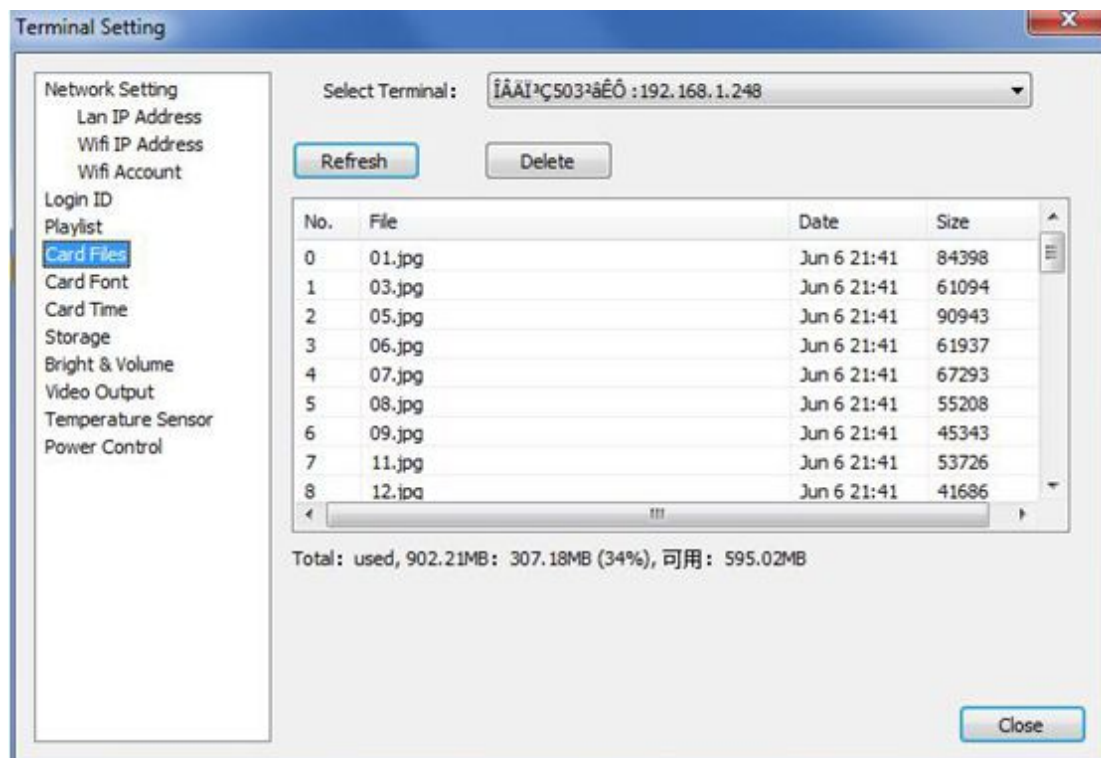


Delete Playlist or File

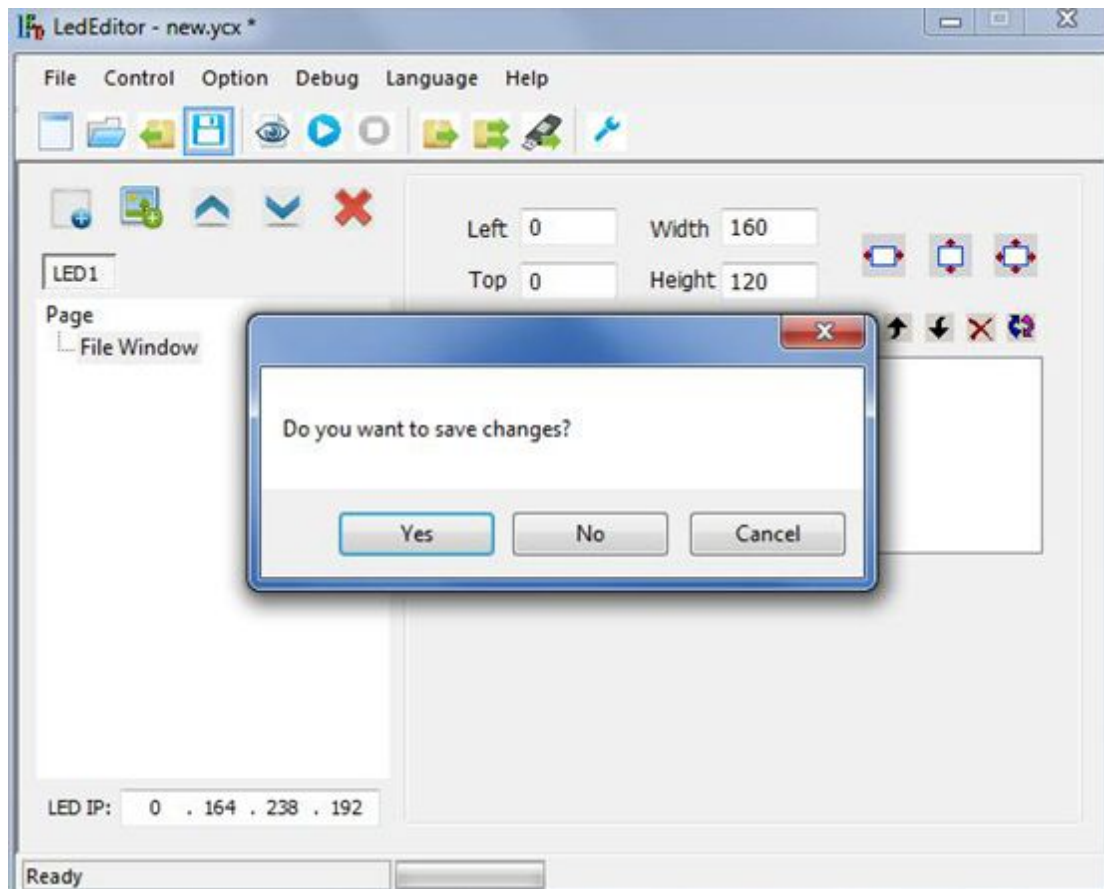
To delete playlist, click Option ➤ Card Setting ➤ Playlist and select the playlist that you want to delete. Click Delete to finish.

To delete file, click Option ➤ Card Setting ➤ Card Files and select the file that you want to delete.

Click Delete to finish.




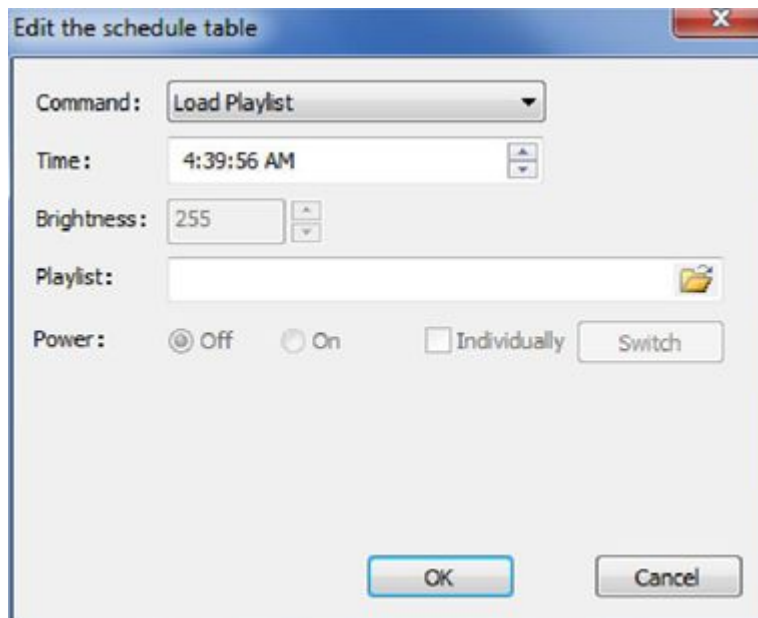
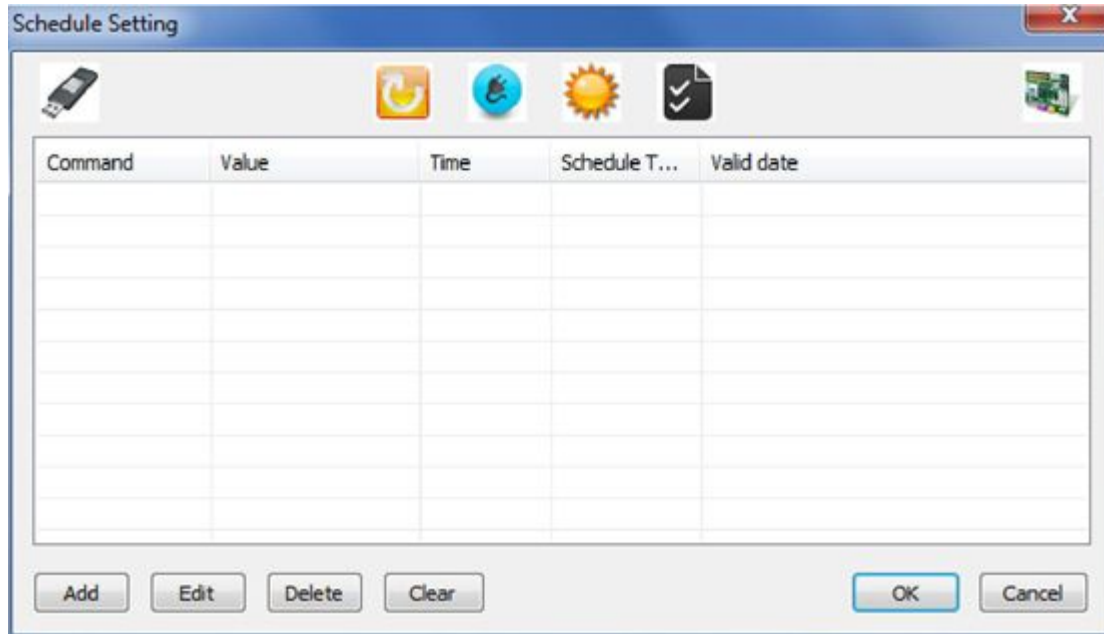
Save Playlist



System Functions

Play According to Schedule

Click Control  Schedule to create and edit playlist order. Click Add to create a new command. Click Edit to modify existing command. Operate on the playlist by choosing appropriate item from the Command menu.



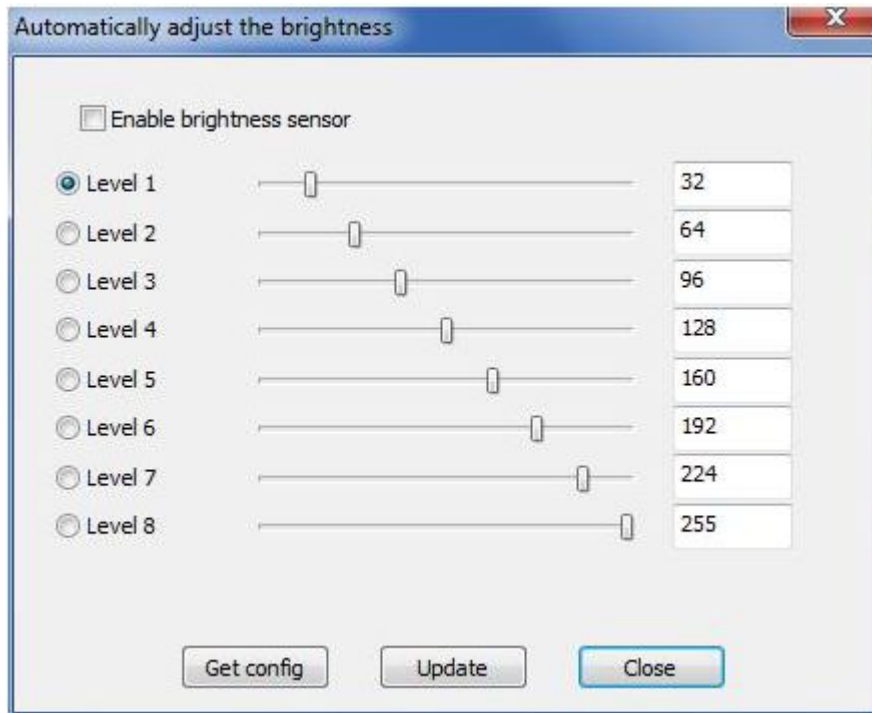
Load Playlist: to display selected playlist at specified hour.

Stop: to stop the currently playing content. The screen will turn black.

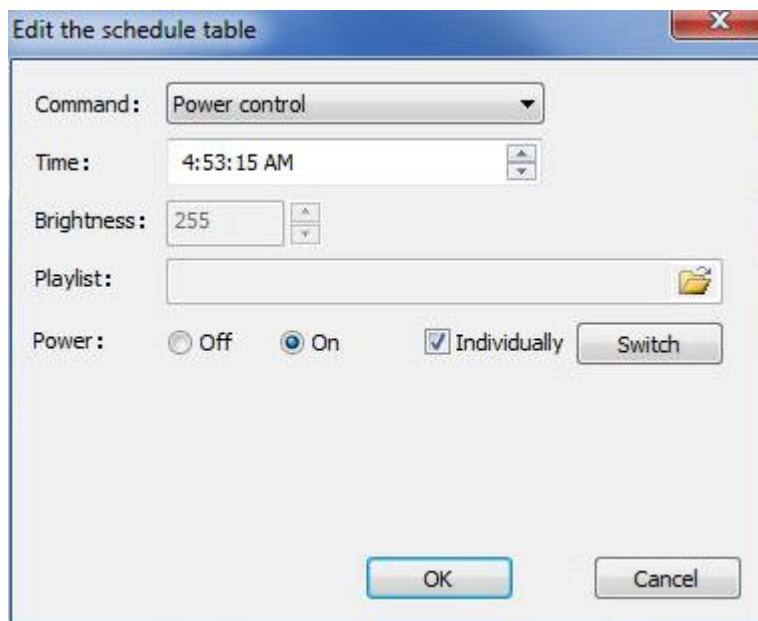
Brightness: to adjust the screen brightness at specified hour. Brightness scale is from 1 to 255.

255 is the brightest.

Brightness can also be adjusted by clicking Option ↗ Card Setting ↗ Brightness & Volume
 ↗ Automatically Adjust the Display Brightness Settings.



Power Control: to switch the LED display on and off according to the schedule. When using this function, make sure that the 505 Cards and power panels are properly plugged in.

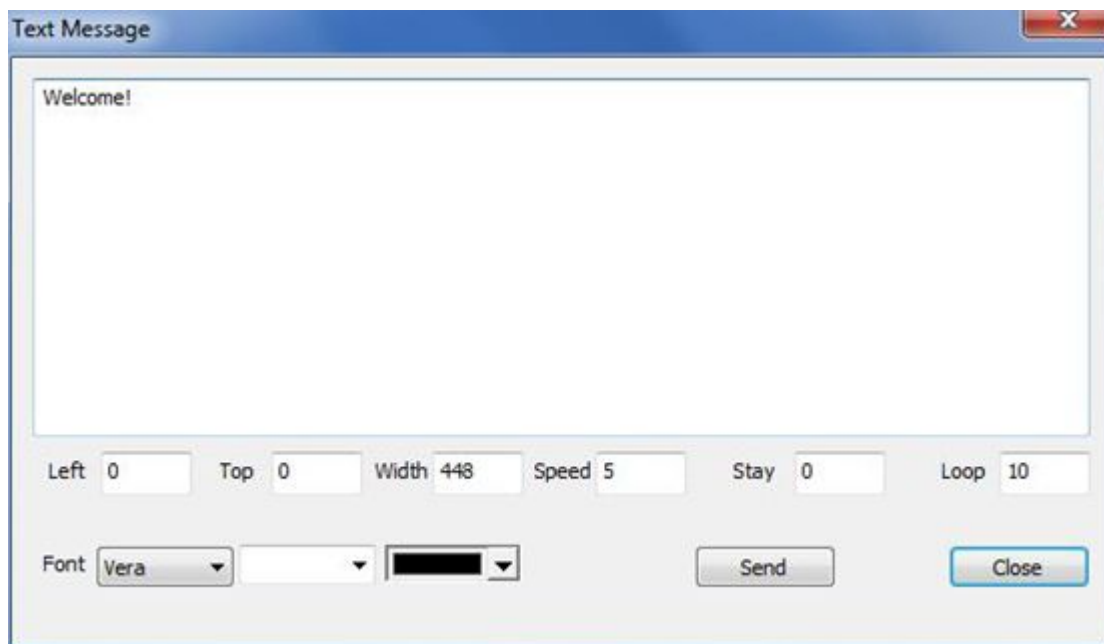


To control each power switch individually, check Individually and then click Switch.




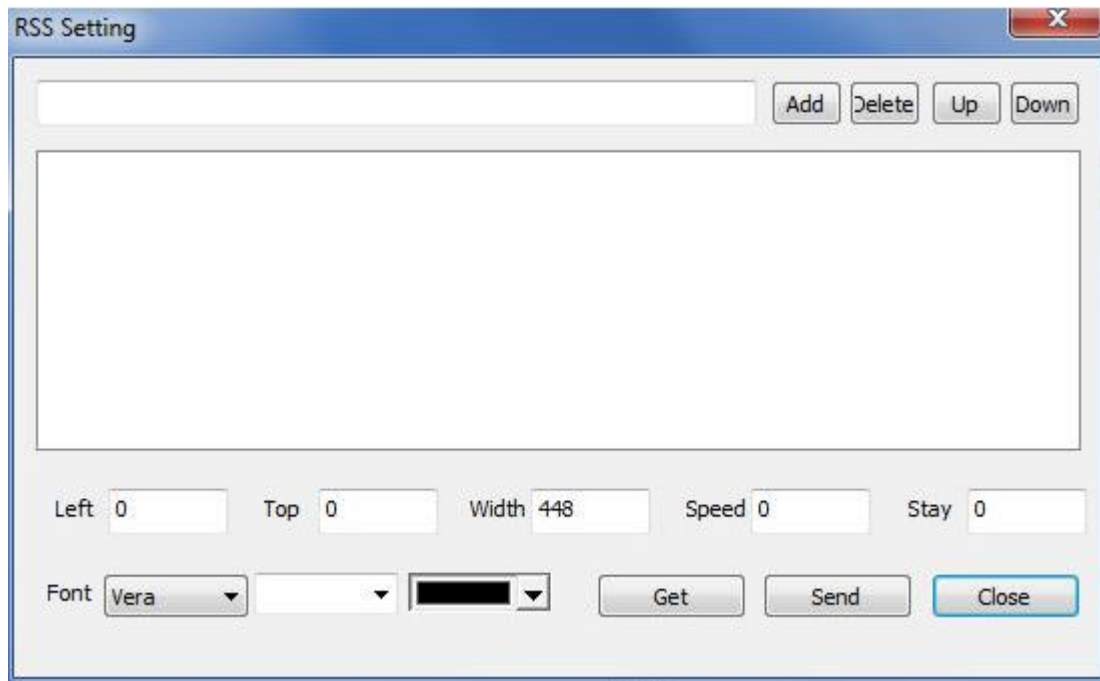
Send Real - time Message

Click Control  Text Message to create and edit message that you want to display in real time.



Display RSS News

Click Control  Update RSS to set up RSS configurations.



Remote Control

Log on to the Network Multimedia Information Distributing System (NMIDS, link in Section 8) to manage all the terminal accounts of 505 Cards in the system.

Login page



Administrators may log in NMIDS and register terminal accounts. Click **Sys Function** ➤ **User Manager** ➤ **Add** to create new account.

>>Editing Admin Account

The Owner Merchant : **Manchester United Ltd**

Username to Login : rooney * (User Name Please use letters, numbers,underscores)

Real Name : wajn rooney *

Role : system manager

Gender : Male

Birthday : 1988-01-01 *(Format: 'yyyy-MM-dd')

Tel. No. :

Mobile No. :

Fax No. :

Email Address : reatwnc_80175071@qq.com

QQ : 80175071

Remark :

OK Return

To put account and password information into terminal control, run **LedShow** and click **Option** ➤ **Card Setting** ➤ **Login ID** to set up the account.

Terminal Setting

Network Setting
Lan IP Address
Wifi IP Address
Wifi Account
Login ID
Playlist
Card Files
Card Font
Card Time
Storage
Bright & Volume
Video Output
Temperature Sensor
Power Control

Select Terminal : 192.168.1.248

Server Address: 192.168.1.4

Login ID: 505test

Password: ●●●●●●

Merchant: nmids

Display Width: 448

Display Height: 320

Read Config Update Config

Close

Set up Wired Network

505 Card can access Internet using router, switch board, etc. Fixed IP or automatic IP are both supported. Click **Option** ➤ **Card Setting** ➤ **LAN IP Address** to set up.

DHCP
 Fixed IP Address:

IP Address:
 Netmask:
 Gate way:
 DNS Server 1:
 DNS Server 2:
 MAC:

Note: If Wifi network is using, this Gate way must be 0.0.0.0

Set up WiFi Connection

Click **Option** ➤ **Card Setting** ➤ **WiFi Account** to set up WiFi configurations.

Terminal Setting

Select Terminal:

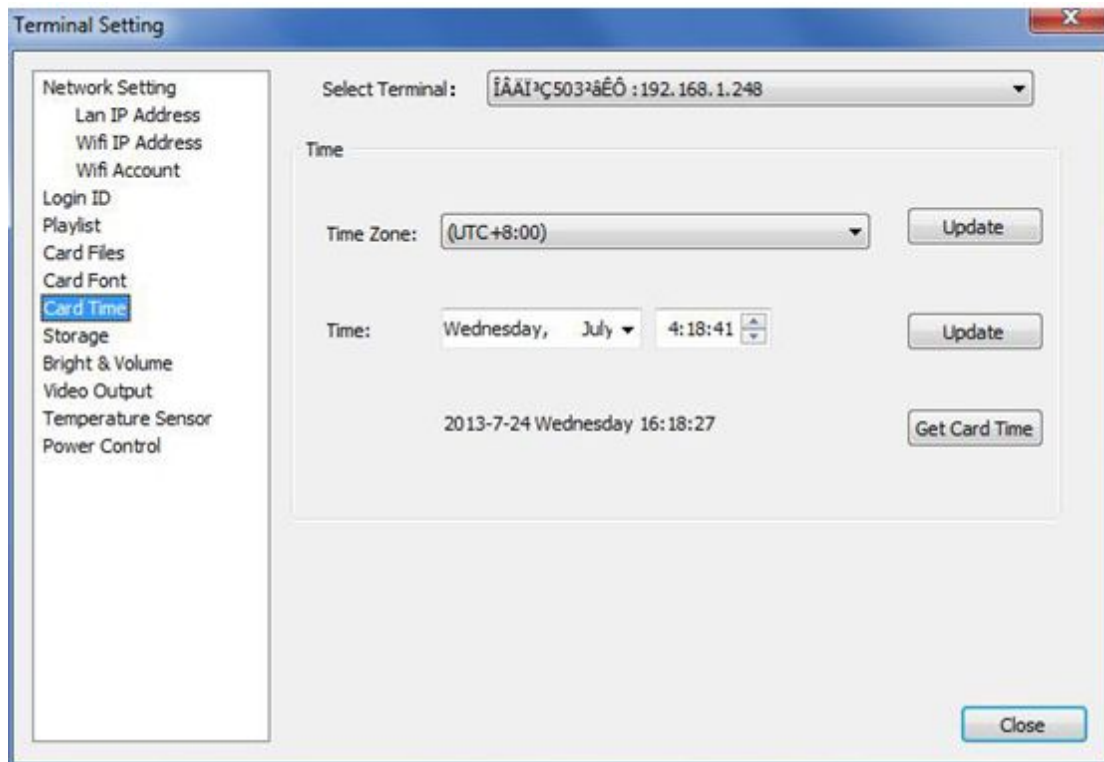
Wifi Account (Need restart prog)

Wifi Account:
 Wifi Password:
 Encryption:

SSID	Signal	Encryption	Speed

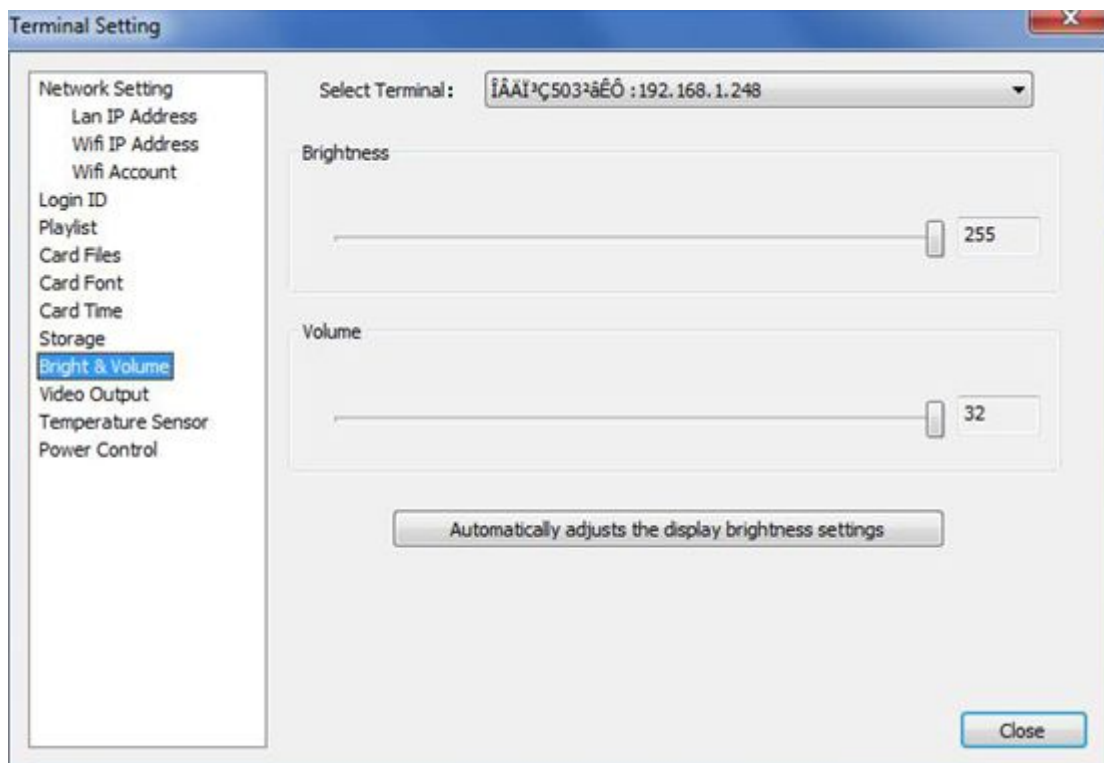
Time Adjustment

To adjust the time shown in 505 Card, click **Option** ➤ **Card Setting** ➤ **Card Time** to change time setting



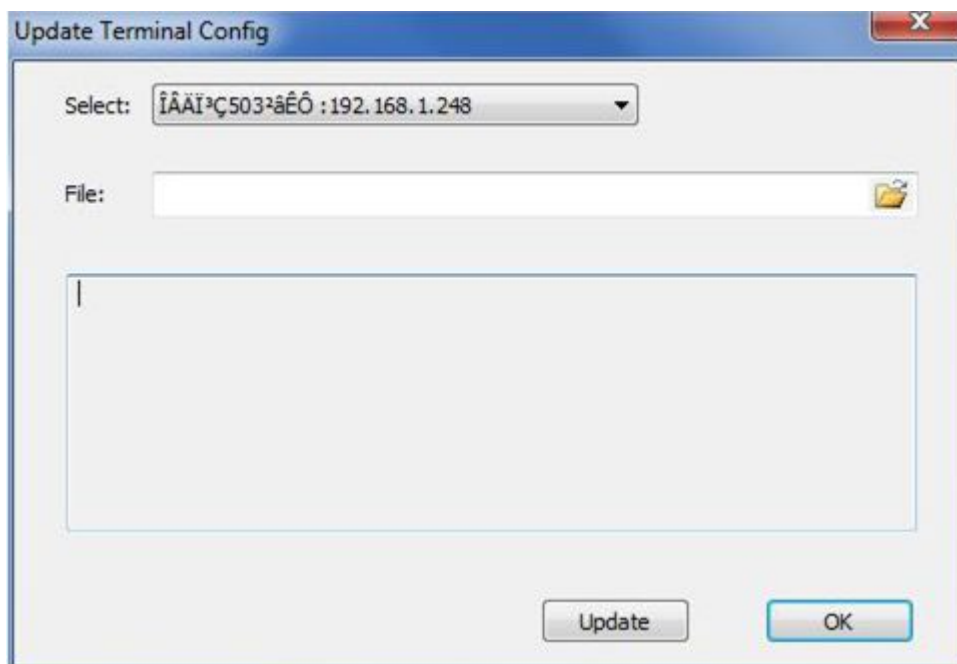
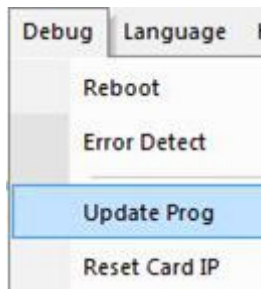
Brightness and Volume Adjustment

To adjust brightness and volume, click **Option** ⇨ **Card Setting** ⇨ **Brightness & Volume** to configure



Update LedShow

Click **Debug** ⇨ **Update Prog** to update LedShow.



Restart LedShow

Click **Debug** ⇨ **Reboot** to restart **LedShow**. When the program is restarting, the screen might turn black, and Internet might become disconnect for a few seconds. It might take 1 or 2 minutes to restart.

